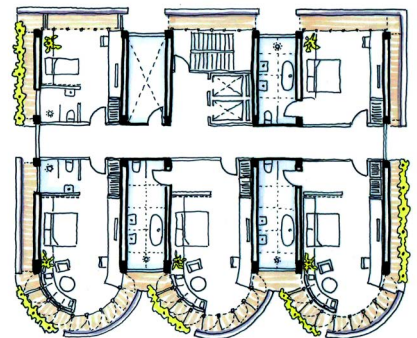


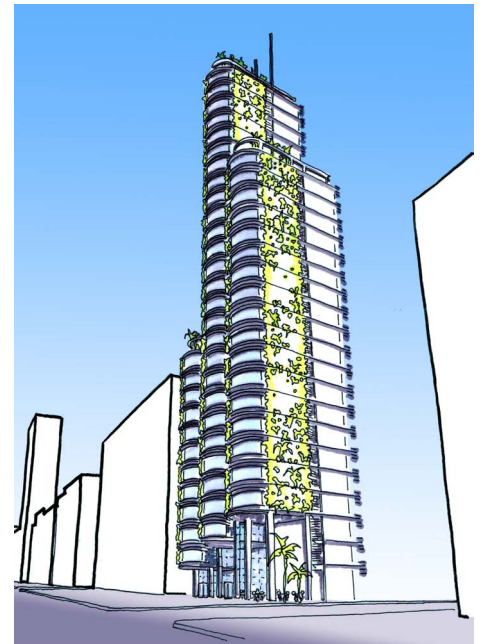
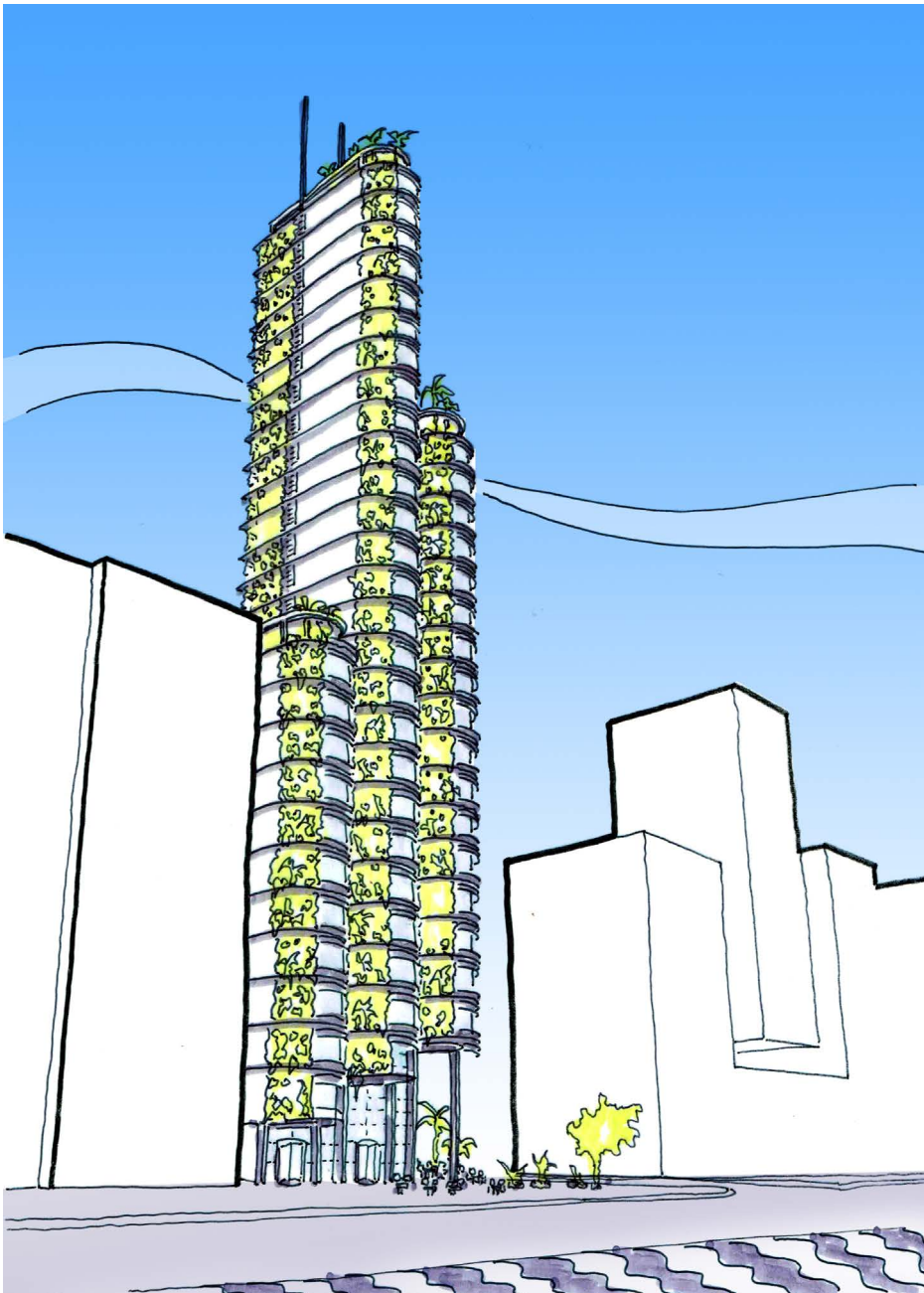


Hotel Ipiranga

Rio de Janeiro

concept



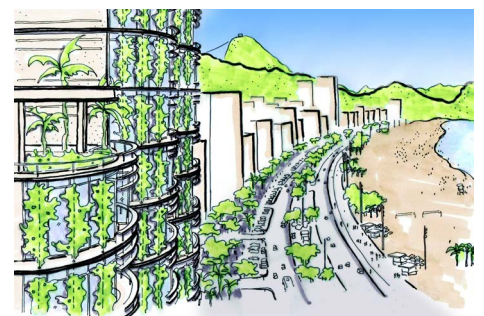
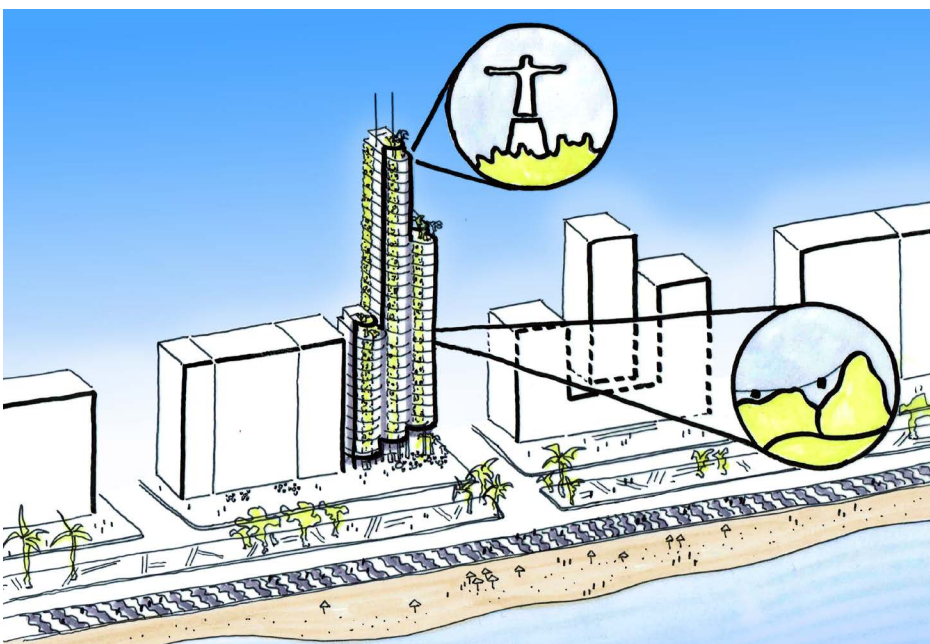


The Ipiranga Hotel Tower is inspired by the existing Ipiranga Building on the Avenida Atlântica along Copacabana Beach. As per the “original” its protruding semi-circular windows and balconies allow spectacular panoramic views from Sugarloaf Mountain over Guanabara Bay and the Atlantic Ocean.

The higher floors also profit from amazing views over the Corcovado and Rios’ famous Cristo Redentor Statue.

Matching the tropical climate the building uses extensive facade vegetation, providing shading and privacy as well as creating a macroclimate along the hotelrooms that has a cooling effect in the mostly hot temperatures of Rio de Janeiro. The semi circular glazing can be fully opened to make the most of the breath taking views and take in the sea breeze from the ocean, but can also be closed during to reduce the noise from the busy streets below and provide shelter in heavy tropical rainfalls.

The lower floors step backwards to create an covered yet open plaza at the buildings entrance also providing a restaurant and a bar.



Hotel Ipiranga
Copacabana, Rio de Janeiro, Brazil

Mathias Koester Architect

Hotel Tower with panoramic views over the Copacabana and Sugarloaf mountain

Concept design
2017