



Our
vision
is green



We design
light, green and luxury
architecture and interiors
in the Mediterranean
and worldwide.

Contents

04	Foreword
06	Introduction <ul style="list-style-type: none">Design statementHow we work togetherOur vision
14	An architectural journey <ul style="list-style-type: none">BackgroundCurrent work
20	Projects
74	Experience
96	Studio <ul style="list-style-type: none">TeamOfficeLogo
102	Chronology

" I believe that architecture has a direct influence on the quality of our lives, and it is my passion to design and create spaces that are uplifting and inspiring to use.

As an architect I am excited to make a difference, to solve problems, to put a smile on someone's face, to never stop learning and to deliver outstanding buildings that enhance our lives and respect our natural world. "



Yours sincerely,
Mathias Koester





Introduction

With over 15 years of experience in international architecture, this portfolio shows the key projects we have been involved in from 2005 to 2022.

Our focus is the design of high-end, sustainable houses and hotel projects in the Mediterranean and worldwide. To this end we founded Mathias Koester Architects in 2020 in Palma de Mallorca, from where we work with strong links to London, Hamburg and Saint Lucia in the Caribbean.

Our current projects in Mallorca feature unique design proposals to make the most of their spectacular settings by the sea, while embracing the challenge of combining sustainability and luxury in the design.

Mathias Koester has a background as project leader, architect and associate for the renowned architecture offices of Foster+Partners, Rogers Stirk Harbour+Partners and Massimiliano Fuksas as well as project developer Arquiproject Mediterraneo, participating in the design and delivery of some truly extraordinary buildings - many of which have become iconic landmarks.

Specialized in building information modelling (BIM) and architectural detailing, Larissa Arantes joined the team in 2021, strengthening our extensive use of advanced 3D modelling and visualisation to ensure excellent communication with our clients and the wider project teams from design to construction.

This portfolio is in English language EN, but we also speak DE, ES, FR, IT and PT.



Design Statement

The common goal in all our projects is to maximise the potential of each site and develop a design response that relates to the unique features, opportunities and difficulties of the site.

Together with the clients brief this drives our design approach, resulting in a wide variety of architectural forms and expressions, which are specific to each project.

We design extraordinary buildings that maximise the potential of the site.

While unique in their appearance, all of our projects follow a similar ethos in the development of a light, comfortable and sustainable architecture.

It is our aspiration to create joyful spaces that are uplifting and inspiring to use. Spaces, that are brought to life by a vivid play of light and shadow and feature natural materials and vegetation, enhancing the users' experience and wellbeing.

Sustainability and the analysis of the specific site conditions are at the heart of our projects and often define the very concept of the buildings.

This involves careful consideration for the climatic conditions such as the sun, temperature, wind, rain and snow, as well as the site conditions regarding daylight, views, privacy, noise control and the use of renewable energy resources.

Aesthetically our designs often follow the concept of legibility, in which every element of the design is expressive of its function and as such contributes to the overall appearance of the building.

How we work together

Our projects are based on excellent communication with our clients and the wider project teams and construction companies.

To this end we speak 6 languages EN, DE, ES, FR, IT and PT and use extensive computer visualisations to achieve the best possible clarity and understanding of the proposed designs.

From initial hand sketches to professional image renderings, videos and virtual reality, we use all available media to discuss the projects with our clients.



Advanced 3D Design

Our advanced 3D models help us and our clients to check the design ideas at every step.

In the concept stage we can thus optimise the design with regards to the views, privacy, shading and overall architectural expression.

During the executive design we can coordinate structure, facades, interiors and installations in order to make sure that the design is built as imagined by us and our clients.

Further the use of advanced 3D modelling helps significantly in establishing cost and time certainty to our projects.

Potential misunderstandings in the design as well as during construction on site can be avoided and hence speed up the overall project process, with both time and financial benefits.

Of course, the visualisations can also be used for further communication and marketing purposes.

We use advanced
3D Models to improve
design, cost and time
certainty.

Teamwork

We promote teamwork and find that the best designs evolve in close collaboration with our clients and the dedicated design team of architects, designers, engineers, cost consultants and the construction companies and builders involved.

Especially on our abroad projects we work with an experienced team of local partner architects and consultants who make those projects possible.



Our Vision

An architect by training, I have been promoting green designs throughout my career whenever possible.

Thereby I strongly believe that done well, green design is not a burden, but much more an opportunity to define a new architectural expression, that relates to a modern, luxurious lifestyle and equally addresses the obvious need to protect our green, natural world.

We call it greenluxury®.

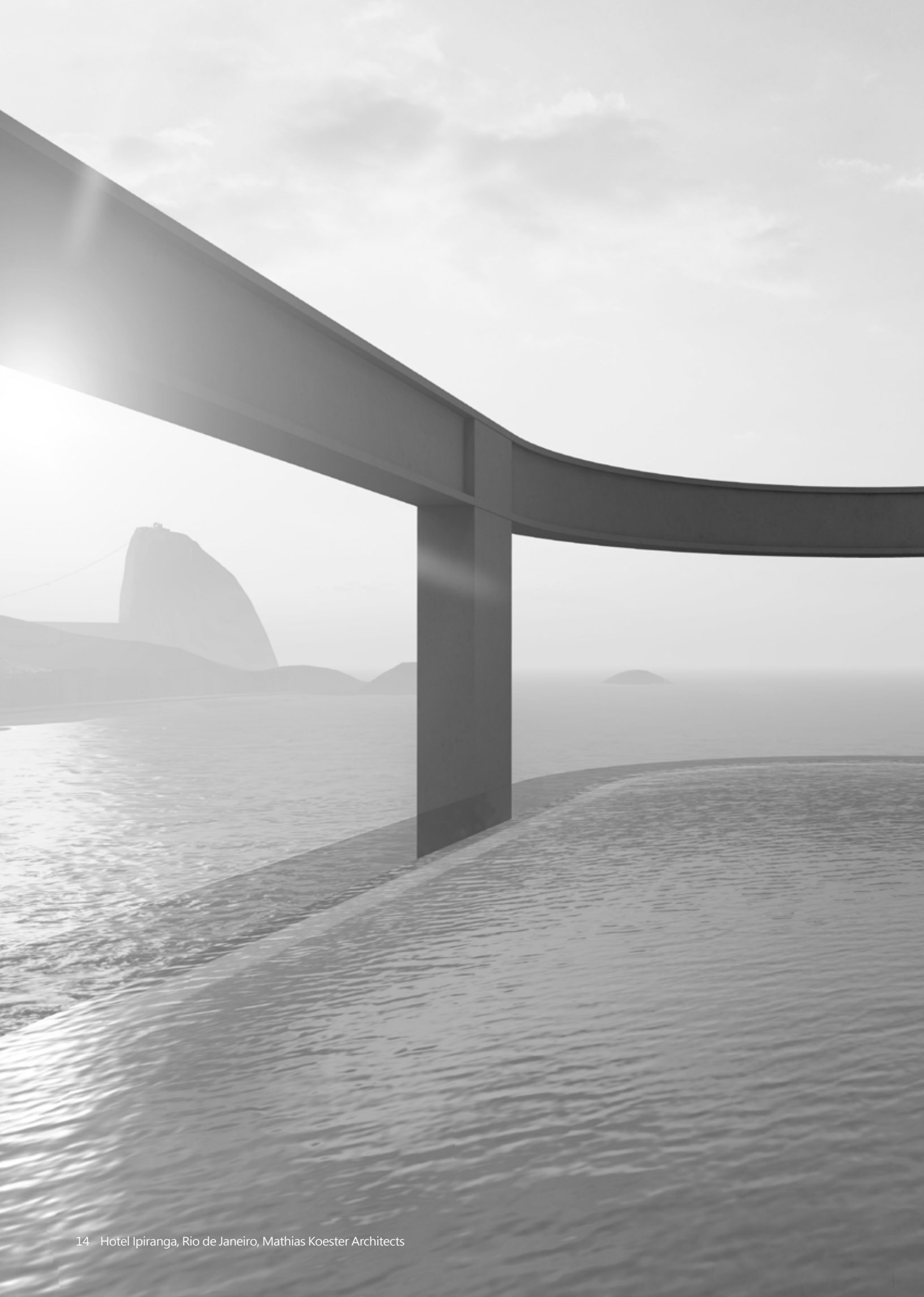
The wow of sustainable living!

With our greenluxury® philosophy we embrace the challenge of implementing sustainability into the high-end market and to create buildings, interiors and design products that are good for the people as well as for the planet.

It is our aim to create healthy, self-sufficient buildings with integrated vegetation that increase our awareness and joy of life.

This may be reflected in the arrangement, shading, detailing and materials of our buildings, as well as in the use of innovative and traditional technologies to save and produce energy on site.

While our studio focuses on architecture, the same principles apply to the fields of design, fashion, mobility and many more and it will be exciting to watch and be part of this great change in the years to come.



An architectural journey

Background

Current work

Background

Mathias Koester grew up in Lüneburg, a student town near Hamburg in the north of Germany.

At school he excelled in natural sciences and art and developed an early interest into technology and design after visiting the Centre Pompidou (1) in Paris during a school trip.

Following high-school he studied architecture under Prof. von Gerkan and Prof. Schultz in Braunschweig, Germany, as well as design and restoration under Prof. Branzi and Prof. Bruno in Milan, Italy.

After graduating in 2004, Mathias started working on the Europark 2 Shopping Centre (3) at Fuksas office in Frankfurt before moving to London, where he was offered a position at Foster+Partners (9) in 2005.

Here he specialised on the design of bespoke building envelopes and had a key role in the development of the Zenith Concert Hall (4) and Walbrook Office Building (5) facades.

In 2007 he took the opportunity to work for both his favourite architects and joined Richard Rogers practice (10) - now RSHP for a total of 8 years.

In 2015 he led the international design team for the new conservation centre of the Louvre Museum in Lens-Liévin from concept to detail design.

Following the Louvre project with RSHP, he set out on a "World Inhabitat Tour" in 2016, travelling and exploring the latest of "green" architecture worldwide.

In 2017 Mathias moved to work for Project Developer APM in Mallorca, where he subsequently founded Mathias Koester Architects in 2020.

Mathias speaks 5 languages and enjoys working within the context of different locations, cultures and climate zones.



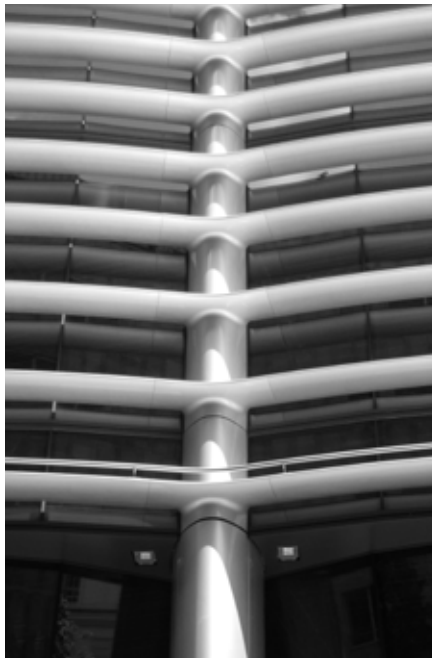
9



3



4



5



6



7



8



1



2

Here he worked closely together with Partner Graham Stirk and became an Associate in 2011.

The project Neo Bankside (6), where Mathias was responsible for the facade and steelwork details, received a 2015 Stirling price nomination for its innovative and high quality design.

Among others he also worked on the facade design of the Leadenhall Tower (7), and became project co-leader for the new Lyon Airport Terminal 1 (8).

Early Inspiration:

- 1 Centre Pompidou by Rogers+Piano
- 2 HSBC Bank by Foster+Partners

Work Experience:

- 3 Europark 2 by Massimiliano Fuksas
- 4 Zenith Saint Etienne by Foster+Partners
- 5 The Walbrook by Foster+Partners
- 6 Neo Bankside by RSHP
- 7 Leadenhall Tower by RSHP
- 8 Lyon Airport by RSHP
- 9 Design Meeting with Norman Foster
- 10 Site Visit with Richard Rogers



10

Current Work



1

We currently work on various villa projects in Mallorca, some on site and well under construction (3,6) while others are in the early concept phases on the drawing boards (7,8).

Further we maintain ongoing projects in Saint Lucia, the Caribbean (5), where we developed a masterplan and a handful of house projects in the years leading up to 2020, while our main studio was still based in London.



3



4



5



2

Studio:

- 1 "Meeting Room" in Palma
- 2 Our logo stands for lightness and a close relationship with nature, combining joyful living, luxurious comfort and sustainability

Projects:

- 3 Villa P116, Mallorca, under construction
- 4 Cliff House, Costa Blanca, concept
- 5 Marigot Treetops, Caribbean, ongoing
- 6 Villa P121, Mallorca, awaiting construction
- 7 Full Circle Living, Mallorca, concept
- 8 Villa P120, Mallorca, ongoing
- 9 Ipiranga Hotel, Rio, concept

Based now in Palma Portixol, the majority of our projects is in the Balearic Islands and southern Spain, but with our love for travel and different cultures we are always up for exciting new projects around the world, like the Ipiranga Hotel in Rio, Brazil (9), for example.

With our international and award-winning design and construction experience and an infinite passion for architecture and the delivery of outstanding buildings, we can offer our clients the full range of services in the fields of architecture, interior design, visualisation and project management.

Our current project focus is the design of high-end, greenluxury Villas and we do aspire to bring this philosophy to hotel, apartment and commercial projects in the near future.

The following portfolio shows a selection of ongoing and past projects in Mallorca, Saint Lucia and other locations around the world.

We hope our designs are inspiring and very much look forward to hear from you as a potential client, coworker or consultant, interested to know a little more about our projects and our way of working.



6



7

Blending architecture and nature, as well as user-comfort and sustainability, we love to work towards our vision of combining these perceived opposites and creating an architectural design style of light and open buildings with flying roofs, integrated vegetation and solar energy.

Our logo (2), the hummingbird, stands for this lightness and a close relationship with nature, combining joyful living, luxurious comfort and sustainability in our work.



8



9



Projects

Mathias Koester Architects

Villa P116, Mallorca, Spain
 Villa P121, Mallorca, Spain
 Oasis House, Mallorca, Spain
 Mako House, CapEstate, Saint Lucia
 Aire Villas, Mallorca, Spain
 Full Circle Living, Mallorca, Spain
 Marigot Treetops, Marigot Bay, Saint Lucia
 Hotel Ipiranga, Rio de Janeiro, Brazil
 The Seascraper, Oceans of the World

Cliff House, Costa Blanca, Spain
 Canopy House, Marigot Bay, Saint Lucia
 StartUp, Mallorca, Spain
 Casa Andalusita, Vejer de la Frontera, Spain
 Maisons Sentlisi, Marigot Bay, Saint Lucia
 Sumara TopUp, Recz, Poland
 Hoch und Hinaus, Hamburg, Germany
 Vardon Plaza, Accra, Ghana



P116 Mallorca

Under Construction



Project Lead
Mathias Koester Architects

Design, Visualisation
and artistic Site Supervision
Concept to Construction
2020 - ongoing

P116, Mallorca, Spain
5 Bedroom Beach Villa with Infinity Pool

The House is designed to make the most of the spectacular views over the Bay - a summer favourite for yachts and boats of any scale.

The orientation of the house follows the slope of the natural terrain and points towards the Mediterranean Sea between the Eastern and Western Hills of the bay.

A large curved canopy provides shade of the southern sun and creates a generous outside dining area next to the pool and the ample deck chair spaces.

Despite the relatively small plot size of 1200m2 the design feels light and spacious.

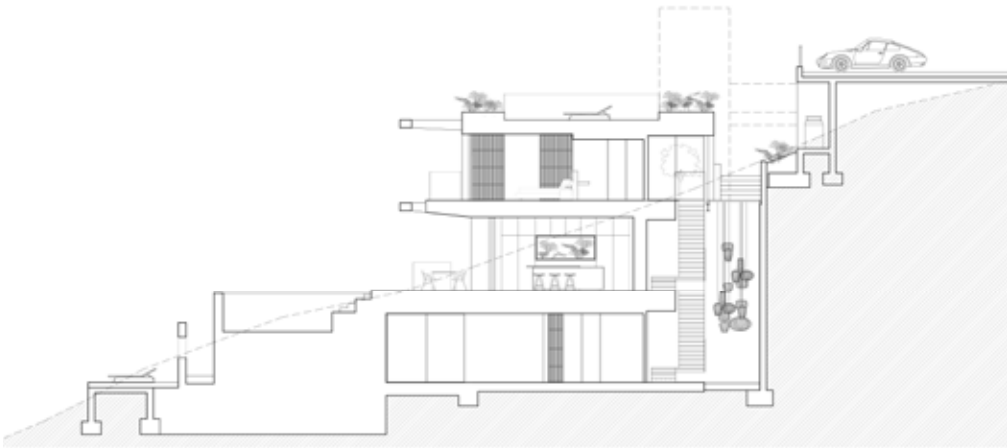
The house also features parking an interior patio with ample vegetation as well as a gym and spa area.

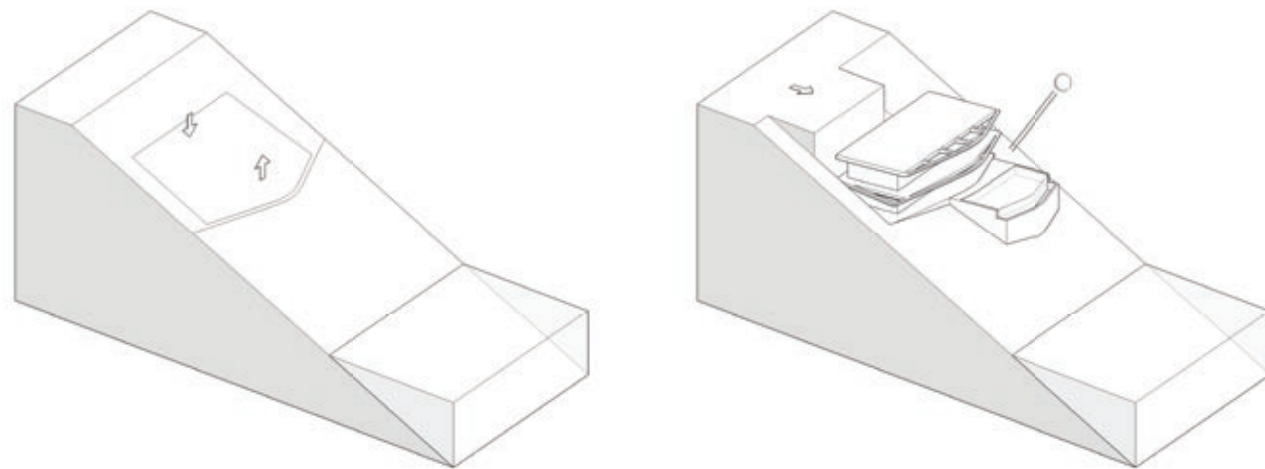




Project
P116, Mallorca

Design, Visualisation
and artistic Site Supervision
Concept Stage to Construction
2020 - ongoing







P121 Mallorca

Preparing for Construction



Project Lead
Mathias Koester Architects

Design and Visualisation
Concept Design
2021-22



Set in the second sea line at the Bay, the project draws inspiration of its unusual triangular site and maximises the partial sea views through the prevailing pine trees by careful arrangement of the interiors, terraces and pool areas.

Shaded by large canopies and facade vines, an open, double height lobby forms the main entrance from the corner of the site.

From here we access the more private living areas at ground floor as well as the bedrooms and library on the upper floor.

Situated to the east of the site we find the living room and master bedroom respectively, making the most of the best views across the Bay and Mediterranean Sea from this point of the site.





P121 Mallorca
Mathias Koester Architects

Design and Visualisation
Concept Design
2021-22





Oasis House Mallorca

Ongoing Project



Project Design
Mathias Koester Architects

Design and Visualisation
Concept Stage
2018 - 2020

Oasis House
Mallorca, Spain

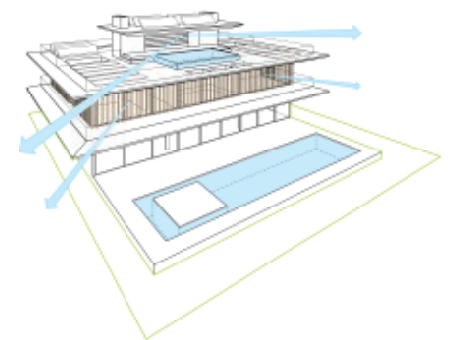
5 bedroom Villa with panoramic
roof top terrace and sea views
set in lush garden surroundings

Interiors	700 m ²
Terraces and Pool	300 m ²

The Oasis house family is designed for an inspiring inside-outside living experience, placing the nature at the central patios of the house.

Large canopies protect the largely glazed southern facades from the sun at both levels of the house and a panoramic roof terrace above allows spectacular views over the lush surroundings.

Further on, large solar panels and pv cells on the upper roof help to further minimise the external energy consumption of these buildings.







Mako House Saint Lucia

Modular Steel House



Project Lead
Mathias Koester Architects

Design Concept and Detail Design
2008 | 2012

Mako House
Cap Estate, Saint Lucia

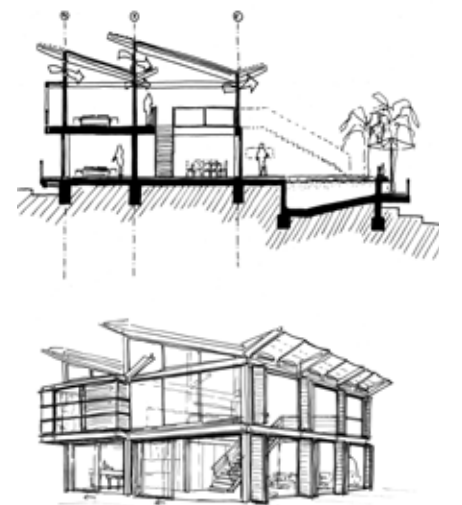
Modular steel house system
with pitched roofing

The Mako House is based on our modular steel house system and can be configured to suit house sizes from 40m2 single-storey tiny houses up to 1200m2 villas.

Initially developed for a tropical site near the Atlantic Sea, the iconic double-wing pitched roof catches the air-breeze and enables natural ventilation throughout the house.

Sharing the same steel frame system the houses come in different cladding systems for Nordic, Mediterranean and Tropic climate zones.

All steel-elements are galvanized for ultimate corrosion protection and then painted according to each projects individual colour preference.





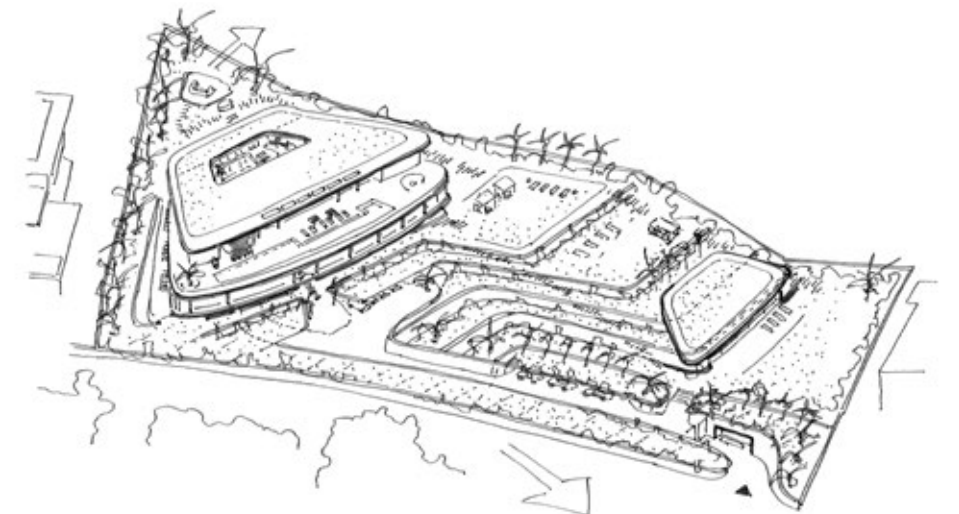
Aire Villas Mallorca

Concept Design



Project Lead
Mathias Koester Architects

Design and Visualisation
Concept Design
2022





Aire, Mallorca, Spain
7 Bedroom Villa with Infinity Pool

Situated in the hills over Palma, the House is designed to make the most of the panoramic views over the Mediterranean Sea, the City of Palma and the Tramuntana mountains. The rounded building shape makes reference to the irregular site boundary and its main view direction towards the Bay of Palma.





Full Circle Living Mallorca

Concept Design

Self-sufficient "greenluxury" cabins in the mallorcan countryside with autonomous water and energy supply and domestic vegetable gardens.





Full Circle Living
Mallorca, Spain

Project Lead
Mathias Koester Architects

Design and Visualisation
Concept Stage
2020



Prefabricated Cabins, configured as 1 to 3 bedroom accommodation with private infinity pools.

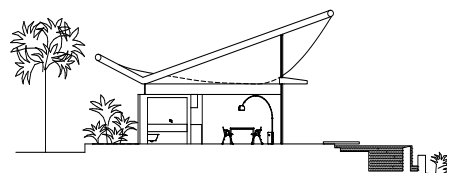
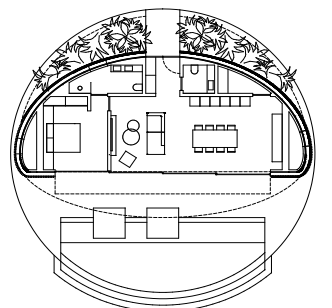
Conceived as an Easter pun in the first Covid Lock-Down we thought of designing an egg-shaped cabin for the beautiful farmland around our “Quarantine-Finca” in Mallorca.

The cabins open up to the spectacular countryside while being shaded by large arc-shaped canopies.

Symbolically the “full circle” cabins express their sustainable approach to the land.

Build in light-weight construction and green-walled facades the cabins further feature green and solar roofs. As part of the “greenluxury” living philosophy they each have their own infinity pool.

The gardens include small patches of farmland for growing a few local vegetables, herbs and citrus fruits as well as the potential of small vineyards.





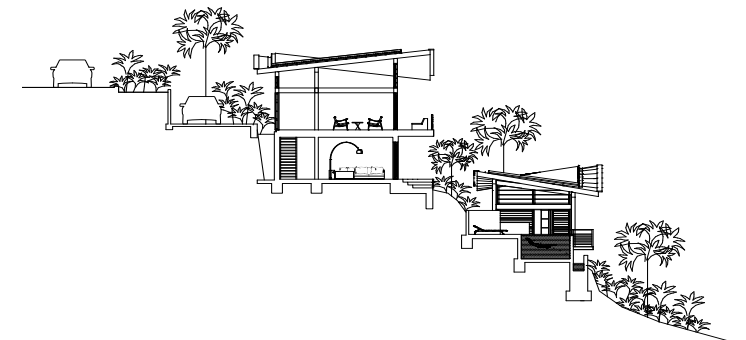
Marigot Treetops Saint Lucia

Concept Design



Project Lead
Mathias Koester Architects

Design and Visualisation
Concept Stage
2013 - 14



Marigot Treetops
Marigot Bay, Saint Lucia

Tree Houses and Spa overlooking
Marigot Bay and the Caribbean Ocean

Situated in the southern Hills of Marigot Bay the site features stunning views over the Bay as well as the Caribbean Sea and Fishermen's Cove.
The curved roof shape and timber construction respond to the clients brief of an organic

tree house, which blends into the lush landscape of site.
Elevated walkways, stairs and bridges through the vegetation give access to three further tree cottages and a central pool area below the main house.

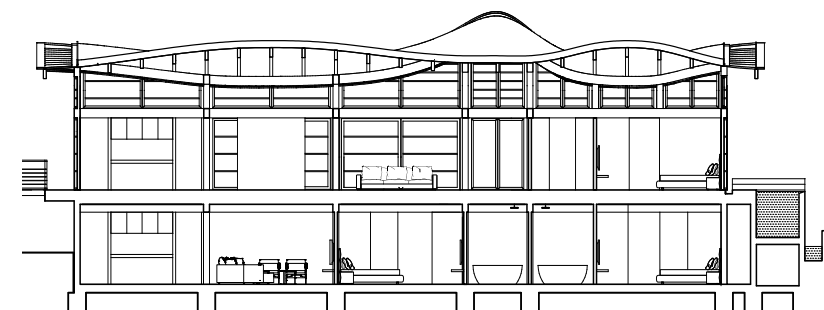


Project Lead
Mathias Koester Architects

Design and Visualisation
Concept Stage
2013 - 14

Marigot Treetops
Marigot Bay, Saint Lucia

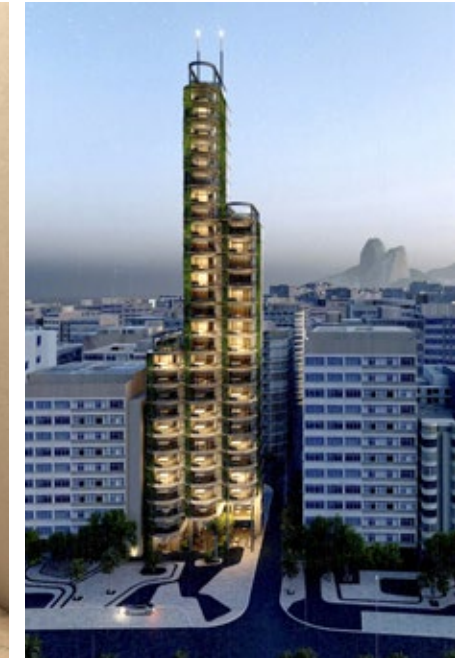
Tree Houses and Spa overlooking
Marigot Bay and the Caribbean Ocean





Hotel Ipiranga Rio de Janeiro

Concept Design



Project Lead
Mathias Koester Architects

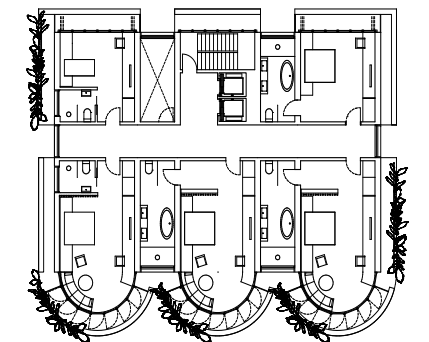
Design and Visualisation
Concept Stage
2017 - 2021

Hotel Ipiranga
Copacabana, Rio de Janeiro, Brasil

Hotel Tower with panoramic views over the
Copacabana and Sugarloaf mountain

The Ipiranga Hotel Tower is inspired by the
existing Ipiranga Building on the Avenida
Atlantica along Copacabana Beach. As per the
“original” its protruding semi-circular windows
and balconies allow spectacular panoramic

views from Sugarloaf Mountain over
Guanabara Bay and the Atlantic Ocean.
The higher floors also profit from amazing
views over the Corcovado and Rios’ famous
Cristo Redentor Statue.
Matching the tropical climate, the building
uses extensive facade vegetation,
providing shading and privacy as well as
creating a macro-climate along the hotel
rooms that has a cooling effect in the mostly
hot temperatures of Rio de Janeiro.
The semi-circular glazing can be fully opened
to make the most of the breath-taking views
and take in the sea breeze from the ocean,
but can also be closed to reduce the noise
from the busy streets below and provide
shelter in the heavy tropical rainfalls.
The lower floors step backwards to create
a covered, open plaza at the buildings
entrance also featuring a restaurant.



The Seascraper

For Sale
\$1.000.000.000

Besides the upcoming space tourism and further adventurous tourist destinations, the Seascraper offers a respective opportunity to experience the world's largest element – the water and its amazing habitat.



Floating underwater tower with hotel and sea research facilities

Built as a skyscraper upside down into the water, the Seascraper creates a habitable link towards the lower levels of the sea and features a unique hotel with a distinctive combination of recreation and scientific facilities.

Half building and half vessel, the Seascrapers design and construction is purely driven by the aquatic forces. The circular setting out provides an effective ring structure to withstand the water pressure. The floor plates diminish in size as the water pressure rises in the lower levels.

The submerged main body is stabilized by the floating ring which connects via a dampened bridge structure to ensure the vertical position of the Seascraper at all times. The main cone reaches down 120m.

Above, a glazed dome marks the top of the structure and allows light to penetrate deep into the inner atrium, which connects the public and private zones of the hotel facilities. While the hotel's lobby, restaurant and café are situated in the levels above the sea, the conference facilities and hotel rooms are located below sea level with a view into the vivid underwater world.

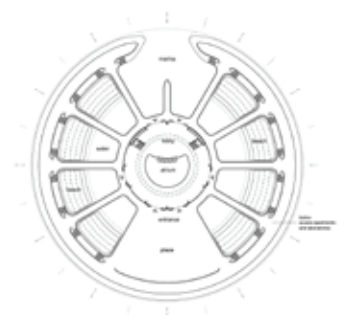
The surrounding ring accommodates a series of apartments with direct access to the Seascraper's beach platforms.

The Seascraper is a floating building. It can drift within the open waters, move to a different location or it can anchor to achieve a fixed position.

This project defines a new challenge for today's engineering to overcome the forces of nature and combine the knowledge of tall buildings and watercrafts to create a new experience and a new icon of advanced architecture.

Project Lead
Mathias Koester Architects

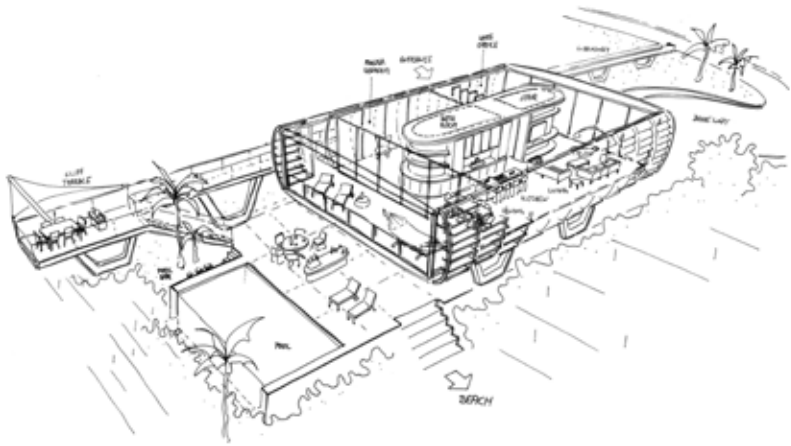
Design and Visualisation
Concept Stage
2007 - 2019





Project Lead
Mathias Koester Architects

Design and Visualisation
Concept Stage
2017



Cliff House
Costa Blanca, Spain

Open plan house lifted above the cliff edge with panoramic views over the Mediterranean. Elevated on a cliff side on the Mediterranean Sea the 'Cliff House' is defined by it's spacious

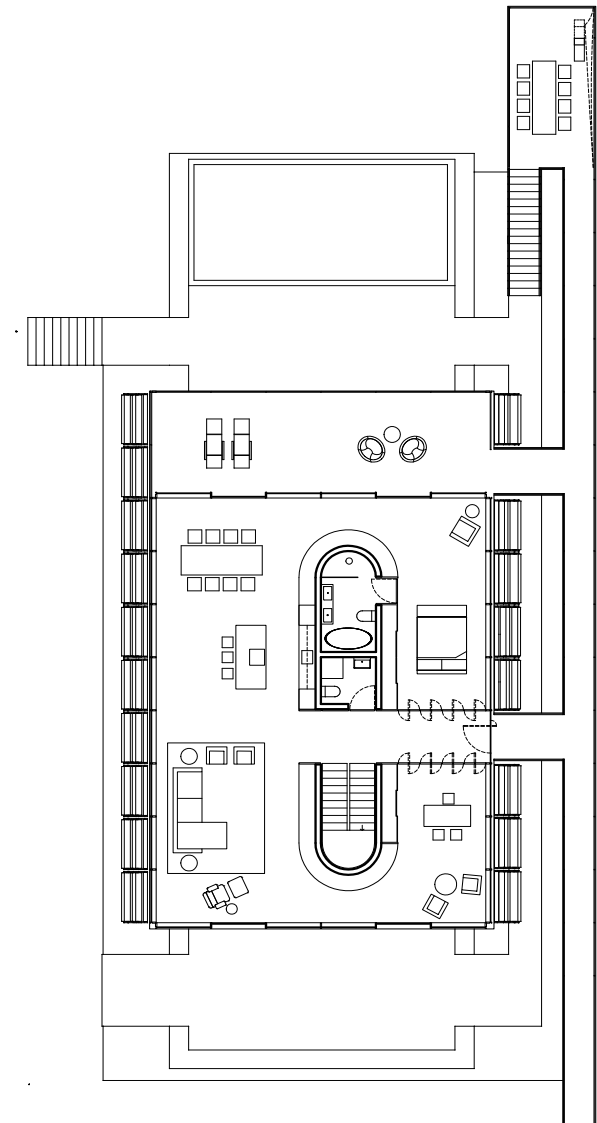
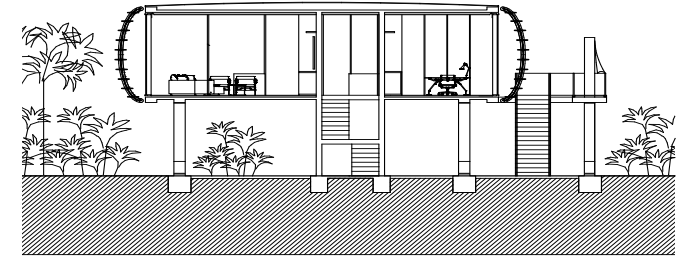
open plan living with panoramic views over the sea and surrounding hills and mountains of the site. The rooms are separated by the central timber clad island, which incorporates all

service functions of the house like the staircase, the bathrooms and the kitchen.



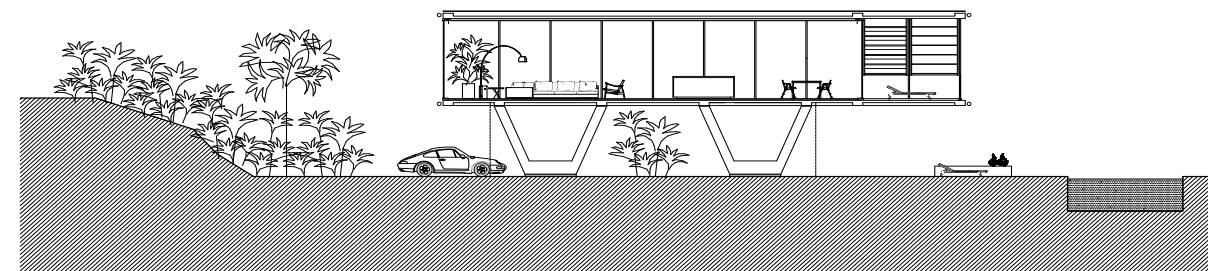
Cliff House Costa Blanca

Concept Design



Project Lead
Mathias Koester Architects

Design and Visualisation
Concept Stage
2017





Canopy House Saint Lucia

Concept Design



Project Lead
Mathias Koester Architects

Design and Visualisation
Concept Stage
2012, 2016 - 17

Canopy House

Beach house with floating roof canopy and views directed over the bay and marina.
Marigot Bay, Saint Lucia

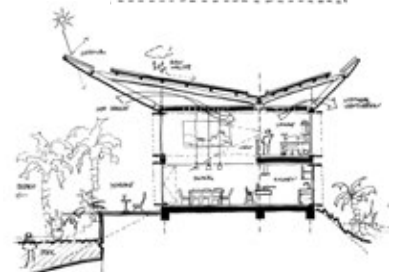
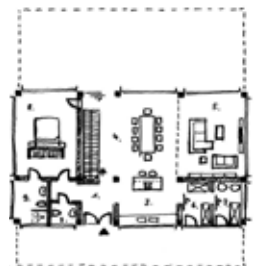
Located in the extraordinary location on the beach of Marigot Bay the project makes the most of the stunning views over the bay and out to the Caribbean Sea.

It opens up quite literally with its cantilevering canopy, which provides both shade and rain shelter, creating a large, covered terrace to enjoy the view at all times.

Inside the central double height space is at the heart of the house, linking it to the formal entrance, the open kitchen, the more private living lounge and the stair to the upper level and gallery.

The house has 3 bedrooms, one at ground floor with its own terrace and two at the upper levels. All feature spacious ensuite bathrooms overlooking the rainforest on the Marigot hillside.

Despite its relatively protected location in the bay the large fabric canopy is retractable for the hurricane season and the timber structure is visibly braced for the strong winds.





StartUp Mallorca

Concept Design



Project Lead
Mathias Koester Architects

Concept Design and Visualisation
2017

StartUp Mallorca
Santa Eugenia, Spain

Start-up office and accommodation in the Mallorca countryside, made of two recycled shipping containers.

I have long been fascinated by modular buildings and the use of shipping containers in particular.

My move to Mallorca triggered this project as a potential option for temporary accommodation and the initial set up for my office near Palma. Made of two standard 40ft containers, the central circulation space with glazed roof lights generates a spacious feeling throughout the office, dining and living areas.

To one side the container walls are generously opened and replaced by timber bi-folding doors that lead to a covered terrace which further enhances the spacious feel of this container housing.

Interiors: 68 m²
Terraces: 32 m²





Casa Andalusita Vejer de la Frontera

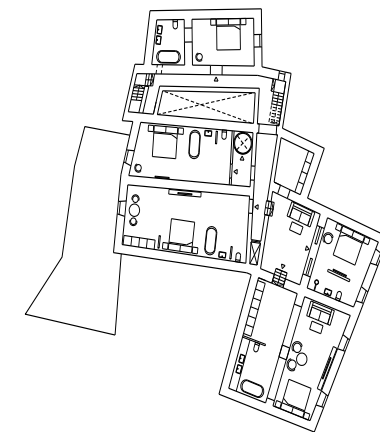
Feasibility Study

Project Lead
Mathias Koester Architects

Concept Design and Visualisation
Feasibility Study
2017

Casa Andalusita
Vejer de la Frontera, Spain

Conversion of a historic town house into
a 7-bedroom boutique hotel and spa.





Maisons Sentlisi Saint Lucia

Ongoing Project



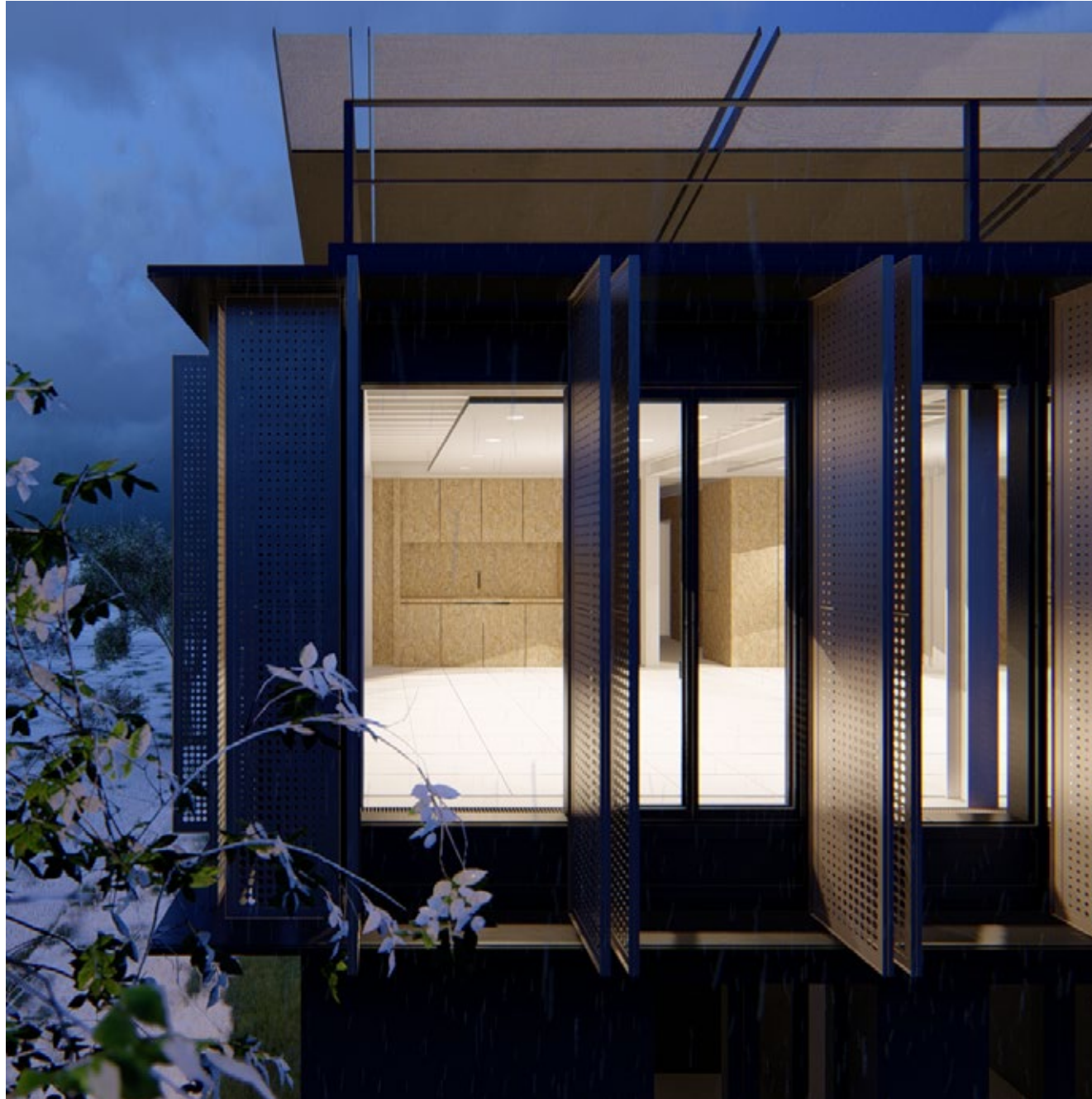
Project Lead
Mathias Koester Architects

Design and Visualisation
Concept Stage
2018 - 19

Maison Sentlisi
Marigot Bay, Saint Lucia

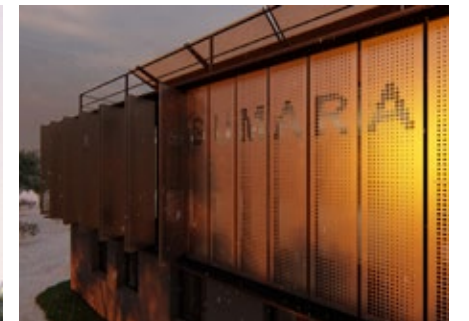
Situated on a privileged plot "Masions Sentlisi" has direct views and access to the beach of spectacular Marigot Bay in Saint Lucia. Planned as a lightweight modular steel system the architecture makes the most of the lush surroundings with its bright and open spaces and enhanced tropical inside-outside living style. Each house features 3 bedrooms with ensuite bathrooms and a large open living- dining- kitchen area.





Sumara TopUp Wielgoszcz

Ongoing Project



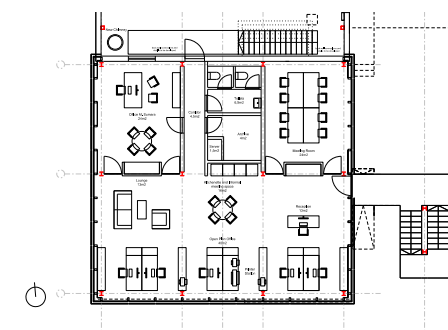
Project Lead
Mathias Koester Architecture

Concept and Developed design
2017 - 21

Sumara TopUp
Wielgoszcz, Poland

Office Extension and Refurbishment for
Sumara Steelworks using 'self-made'
3D cut steel facade panels

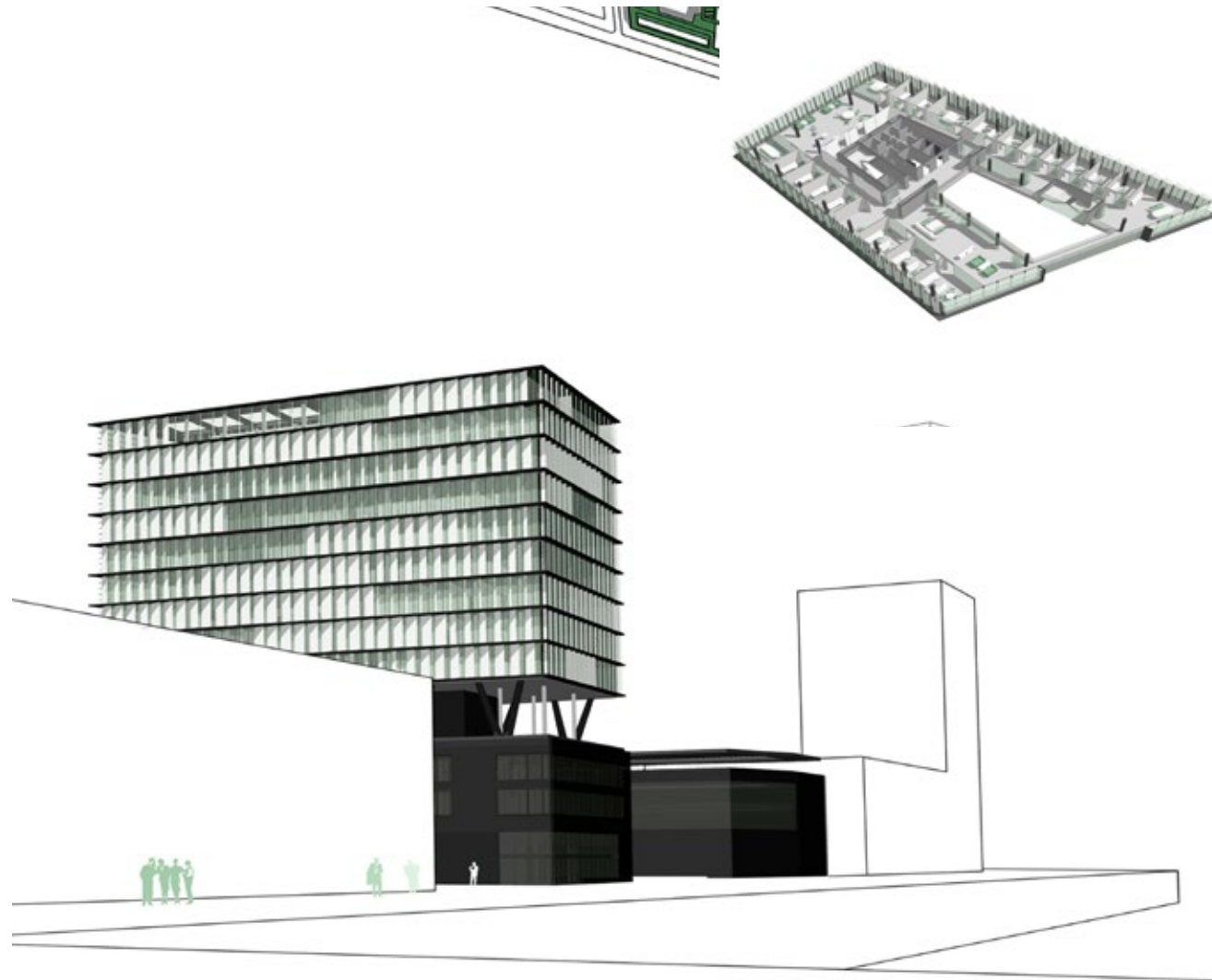
The current office spaces of the steelwork
factory are topped-up by a lightweight steel
construction adding an additional level to
the premises.



The ground floor will hold refurbished staff
and changing quarters as well as a canteen
and seminar room, while the new offices and
a conference room are planned for the upper
level.



The new interiors are designed as a com-
bination of OSB timber panels and exposed
white steelwork elements. The exterior steel
shading panels will be custom cut and
fabricated in the factory itself.

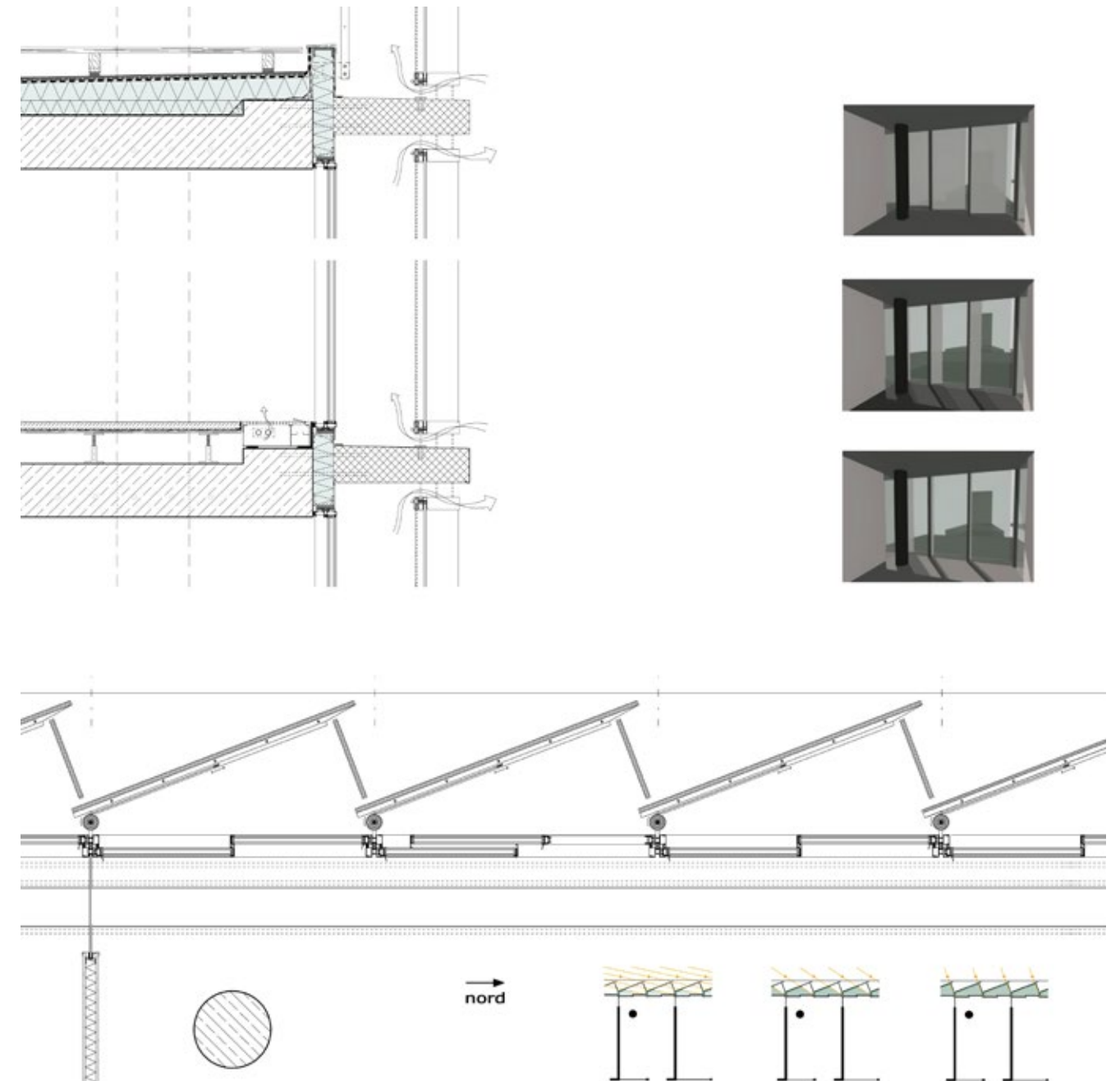


Hoch und Hinaus Hamburg

Sustainable Office Concept

Awards

2003 BDA Student Award- Extraordinary Detailing



Student Project
Mathias Koester +
Joachim Lütke Dörhoff

Design Concept
2003

Studies
Architecture

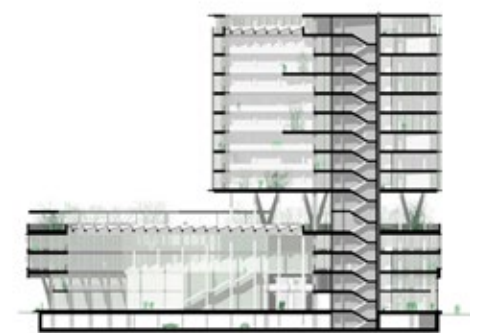
TU Braunschweig
Prof. Krusche, Prof. Fisch

Sustainable office building

Following the new Hamburg Harbour-City masterplan, the project consists of a courtyard base building and a tower at one corner of the site.

We proposed a mixed-used development with retail, offices and residential penthouses in the different building zones.

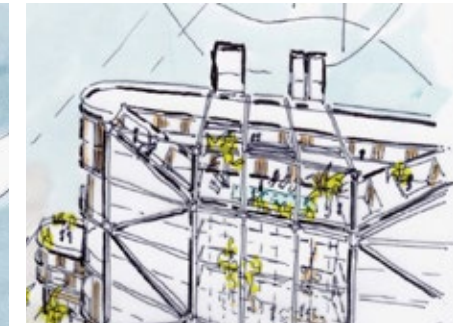
Special attention went into the development of a sustainable service strategy as well as the design of a unique facade system, providing lateral shade from the morning and evening sun, while maintaining maximum views over the Harbour.





Vardon Plaza Accra

Concept Design



required floor area and make the development financially viable.

The so formed plaza is clearly defined by the existing adjacent church, the main Vardon building with its open auditorium at ground level and a low market building bringing additional visitors to the square.

A mix of retail, offices and residential uses ensures the site to be well animated at all times, encouraging formal and informal encounters in Accra's new plaza and meeting point.

Unfortunately travels to Accra in 2016 had to be cancelled for personal reasons, but the project remains ongoing, looking for funding and co-investors in Ghana.

Project Lead
Mathias Koester Architects

Concept design
2015

Vardon Plaza
Accra, Ghana

Mixed used public space with
auditorium, food market,
offices and residential use

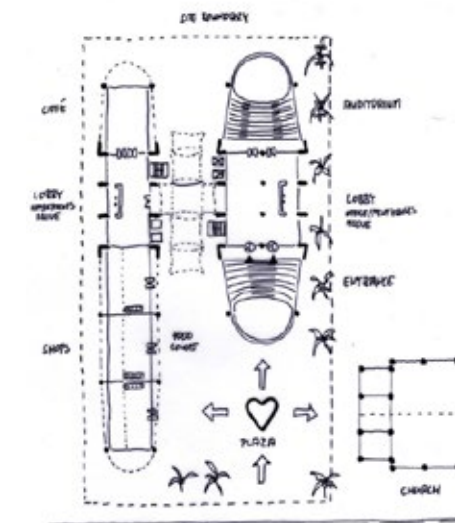
The project idea springs from Maxwell Vardon's ambition to create a democratic place for his hometown of Accra in Ghana.

A public place that encourages open discussions, meetings and events - a platform open to all to help foster the young democracy of the country.

The proposal is a mixed used development to create a vibrant environment for his vision of this new- so far unique- approach in Accra.

The buildings step back from the site boundary to open up a public space.

Very much like the centre Pompidou in Paris - the project proposes a higher building on around one third of the site to achieve the





Experience

Foster and Partners

Walbrook Office Building, London
Zenith Concert Hall, Saint Etienne

Rogers Stirk Harbour and Partners

The Leadenhall Tower, London
Neo Bankside Residential Towers, London
Lyon Airport Terminal 1, Lyon

Fuksas

Europark 2 Shopping Centre, Salzburg

Arquitecto Mediterraneo

Various Villa Projects, Mallorca

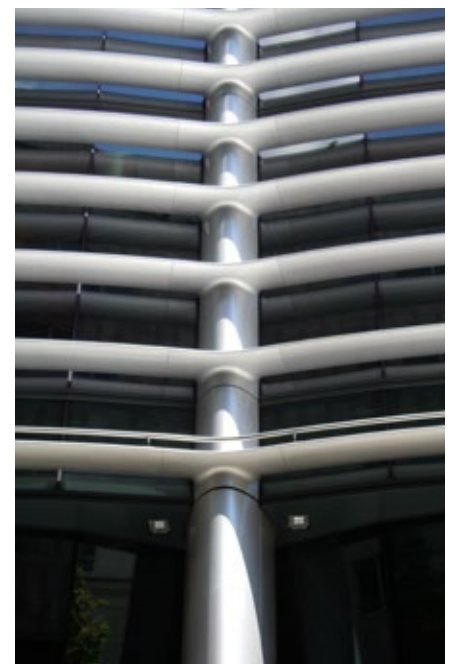
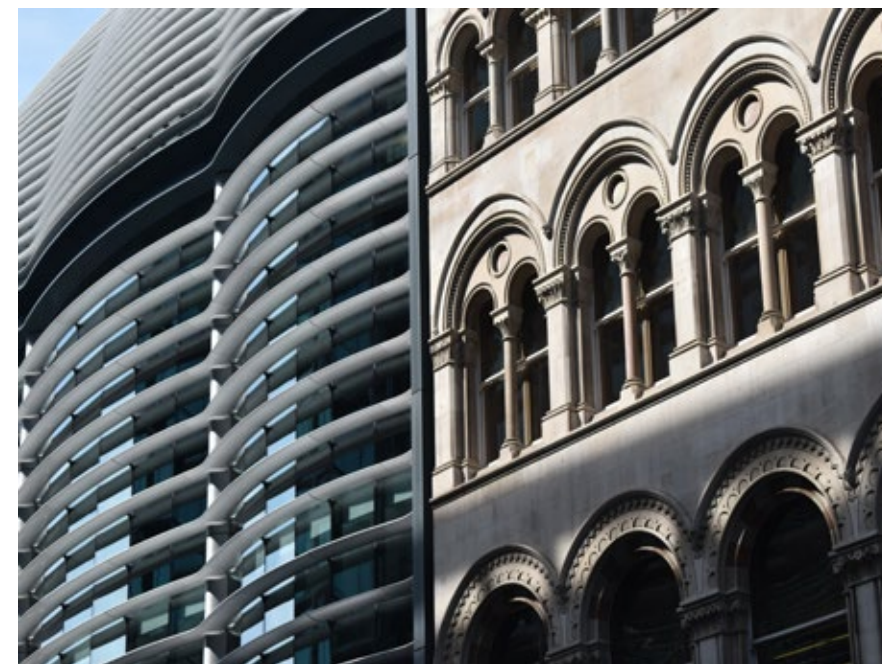


The Walbrook London

Completed

Awards

New City Architecture Awards- High Commendation



Architect for
Foster and Partners

Facade and roof design
Concept design to construction
2006 - 2007

The Walbrook
London, UK

Office building, 9 levels
with louvered glass facades

Next to Wren's Church of St Stephen
and close to St Paul's Cathedral, the building
occupies a particularly sensitive site

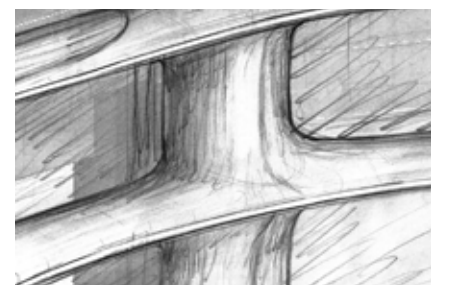
within a number of protected view corridors
in the City of London.

While the scheme's massing is determined
by the historical fabric of the city, the
horizontal bands of reflective brise soleil are
a contemporary statement in an area where
planning guidance has traditionally favoured
the use of stone.

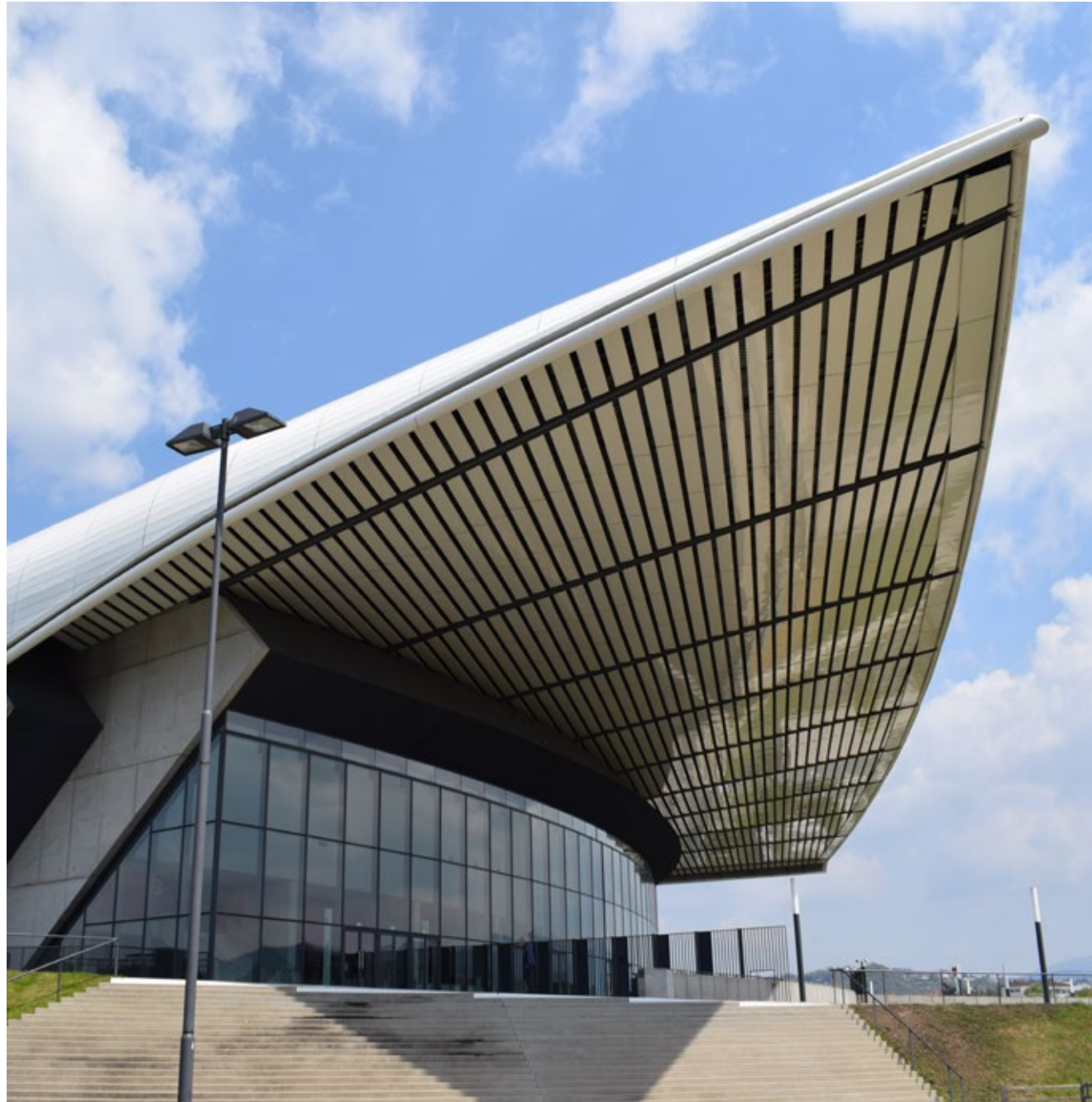
Made of a glass-fibre-reinforced polymer,
a material more commonly used in the
bodywork of cars, the louvers wrap the entire
building, unifying the main volume with the
receding upper levels, so that from the street
the facade appears as a continuous arc.

At ground level the facade is drawn back
behind a colonnade, which is lined with
shops and cafés.

Mathias Koester was responsible for the
façade and roof design and the complex
setting out of the building geometry including
the distinctive brise soleil louvers.







Zenith Saint Etienne

Completed

Awards

2009 RIBA International Award



Architectural Assistant for
Foster+Partners

Facade details and Interiors
Concept design to Detail design
2005 - 06

Zenith
Saint Etienne, France

Concert Hall, 7000 spectators
with sustainable ventilation concept

A state-of-the-art performance and cultural facility for Saint-Étienne, the Zénith is the first such venue to be built in the Rhone-Alpes region of central southern France. The building's distinctive cantilevered roof structure was developed in response to detailed aerodynamic studies.

The roof is designed to act as a highly efficient wind scoop to channel and intensify the natural flow of air through the building in order to reduce its energy demands. Cooling air currents are harnessed at night-time and directed through the auditorium. The building's exposed concrete finishes are also utilised as a radiant cooling surface, thereby reducing the need for mechanical systems. Additionally, the deep overhang of the roof canopy ensures that the glazed foyer is always shaded from direct sunlight. The auditorium is designed to be highly flexible and can be configured for audiences ranging from 1,100 to 7,200 people.

Mathias Koester was responsible for the main glass façade and interior design of the concert hall and lobby spaces.





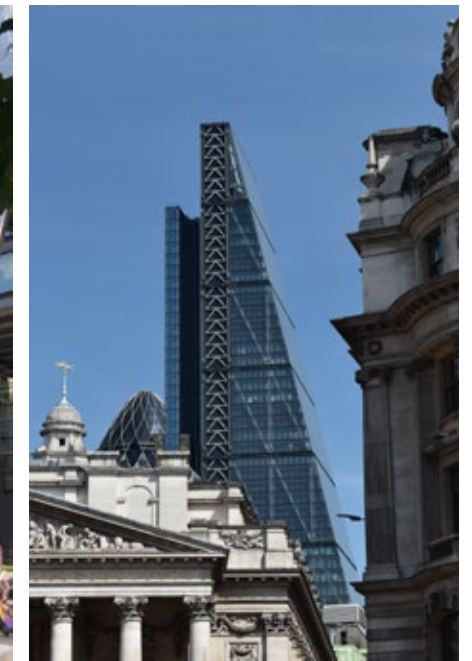
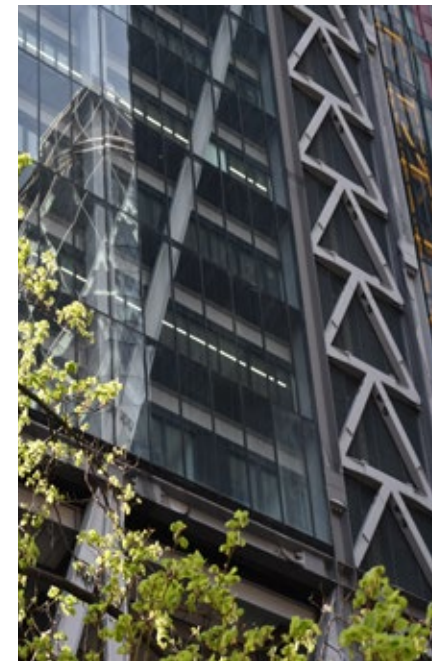
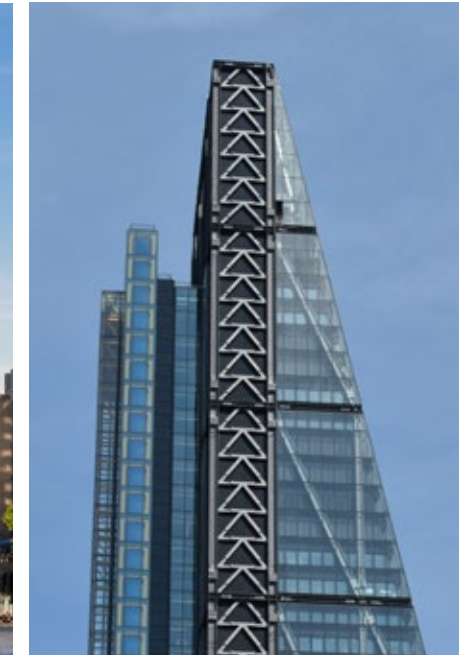
Leadenhall Tower London

Completed

Awards

2016 New London Awards Office Buildings - Winner
2015 City of London Building of the Year

2011 Pre-certified BREEAM Excellent Rating
2011 Working (Unbuilt category): NLA Awards



Associate for
Rogers Stirk Harbour+Partners

Facade design
Detail design and tender
2010

The Leadenhall Tower
London, UK

Office Tower, 51 levels with
7 storey public space at ground level

This 51-storey tower opposite Lloyd's of London rises to a height of 225 metres. The building's tapering profile is prompted by a requirement to respect key views of St Paul's Cathedral.

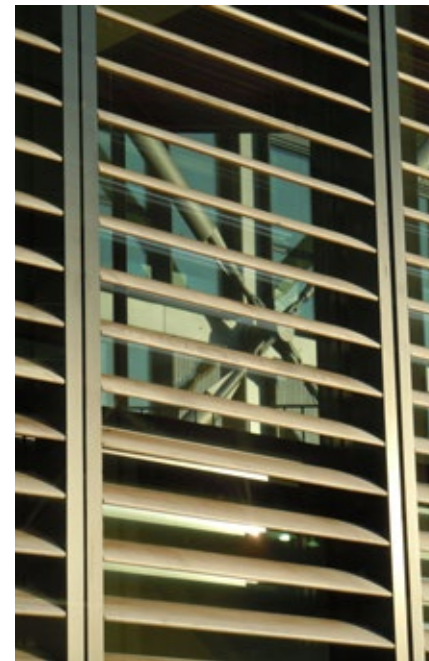
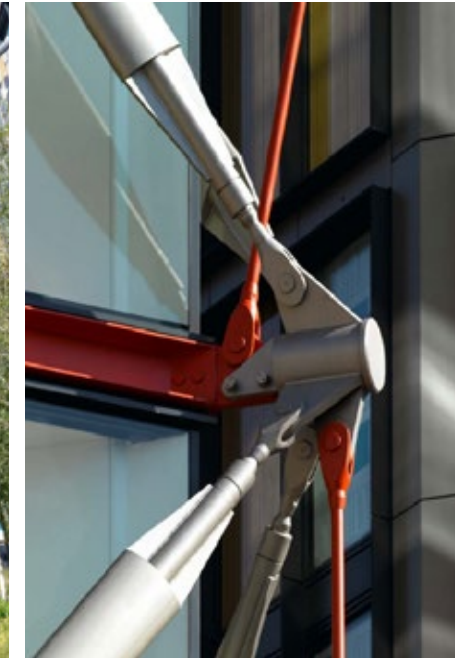
Instead of a traditional central core providing structural stability, the building employs a full perimeter braced tube which defines the edge of the office floor plates and creates stability under wind loads. The circulation and servicing core is located in a detached north-facing tower, containing lifts, service risers, on-floor plant and WCs.

Although the tower occupies the entire site, the scheme delivers an unprecedented allocation of public space. The lower levels are recessed to create a spectacular, sunlit seven-storey high public space.

Mathias Koester was responsible for the facade detail design and tender package when the project went ahead in 2010, 2 years after the financial downturn of 2008.







NEO Bankside London

Completed

Awards

2015 RIBA Stirling Prize Shortlist
2015 RIBA National Award
2013 London Building Excellence Awards:
Best Large Housing Development
2012 RESI Awards: Development of the Year

2012 Structural Steel Design Awards
2011 Best Large Development and Grand Prix Award:
Evening Standard New Homes Awards
2011 Best International Development (multiple units):
International Property Awards



Architect for
Rogers Stirk Harbour+Partners

Design Lead
Facade and steel detail design
Concept to Construction
2007 - 2010

NEO Bankside, London, UK, Facades

Residential buildings, 12, 18, 24 levels
with wintergardens and glazed lifts.

This residential scheme lies in the heart of the Bankside area of London, located close to the River Thames and directly opposite the west entrance to Tate Modern and its new extension.

The four hexagonal pavilions have been arranged to provide residents with generous accommodation, stunning views and daylight. The steel and glass pavilions take their cues from the immediate context.

The overall design hints at the former industrial heritage of the area during the 19th and 20th centuries, responding in a contemporary language which reinterprets the colouration and materials of the local architectural character.

The oxide reds of the Winter Gardens echo those of Tate Modern and nearby Blackfriars Bridge, while the exterior's timber clad panels and window louvers give the building a warm, residential feeling.

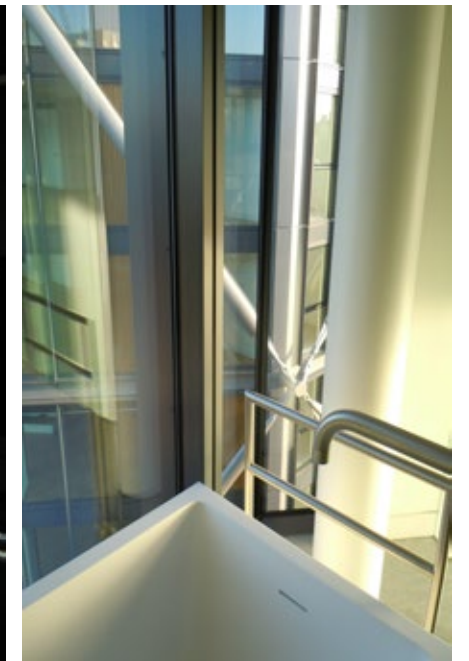
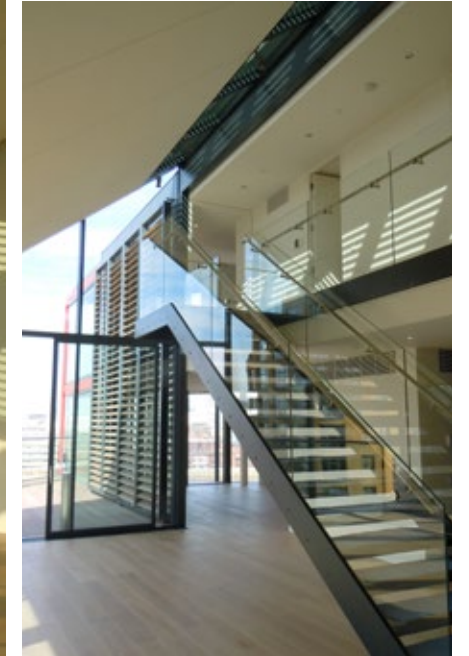
The pavilions' distinctive external bracing system has removed the need for internal structural walls and created highly flexible spaces inside the apartments.

A generous public realm is created which is animated by retail at ground level.



Architect for
Rogers Stirk Harbour+Partners

Design Lead
Flat Layout + Lobby Design
Concept to Construction
2007 - 2010



NEO Bankside, London
Interiors

The 217 residential units range from 30m² studio flats to 500m² penthouses and are arranged such, that each unit is brightly lit by natural daylight and has views into the garden or over the city. Detailed studies have been undertaken to coordinate and optimise the flat layouts with the glazing in the facades, as well as the external steel bracing.

Interestingly, the dramatic appearance of the bracing and nodes has become a selling point, with many buyers requesting apartments with nodes outside their windows.

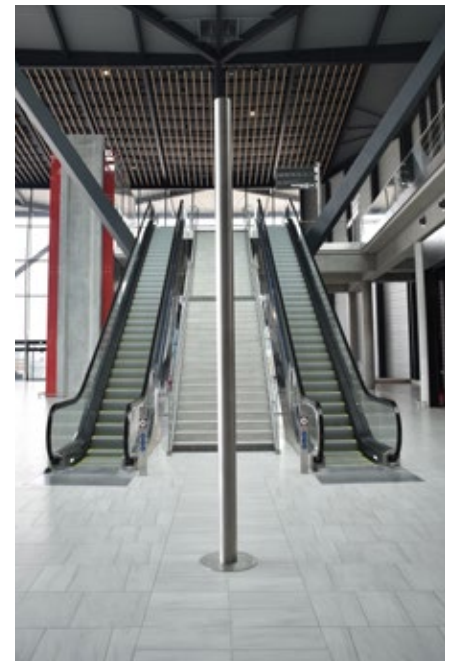
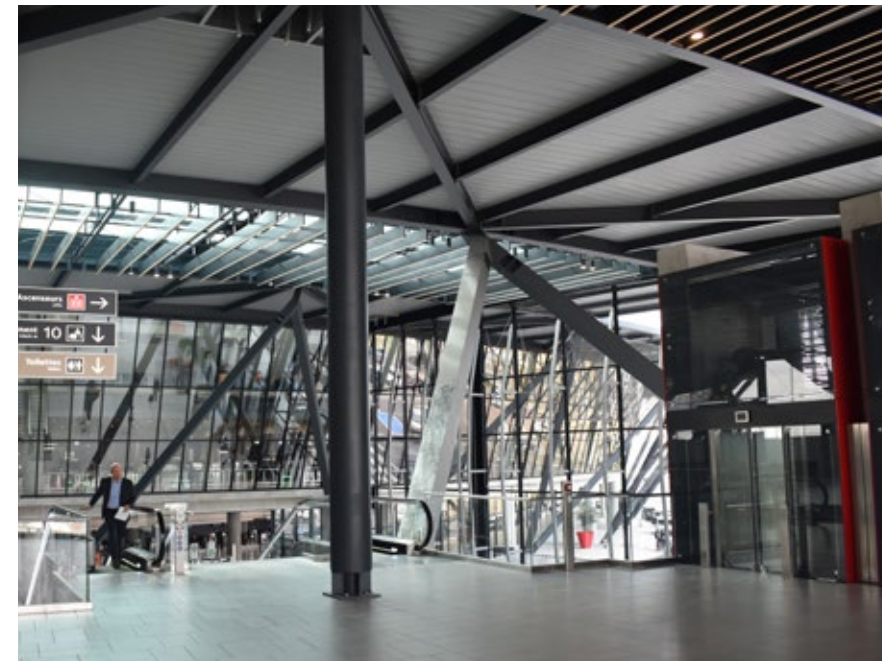
All flats generally feature ensuite bathrooms and open plan kitchens. Single glazed wintergardens with large bi-folding doors at the north and south of the buildings act both as enclosed terraces and addition to the interior living spaces. The flats have solid oak flooring, stone bathroom finishes and modern white kitchens. Together with the timber privacy screens and bi-folding wintergarden doors of the facades these elements define the interior feel of the apartments.

Mathias Koester defined the flat mix and their layouts in the early design stages, before concentrating primarily on the design of the facades and structure of the project.



Lyon Airport Terminal T1

Completed



Project Co-Lead Architect for
Rogers Stirk Harbour+Partners

Design, planning, costs
Building application to construction
2013 - 16

Saint-Exupéry Airport, T1
Lyon, France

New Terminal building including check in, departures, arrivals and baggage reclaim. It was important that the design proposals should create a new identity for the airport, yet respect the original architecture and complement the nearby TGV train station, designed by Santiago Calatrava.

RSHPs competition winning solution is a circular building made up of bold, simple and elegant structural elements which extend the existing airport.

This new Terminal 1 will nearly double the size of the airport, enabling it to welcome an additional five million passengers annually. The angled facade allows passengers to take advantage of natural light and views over the airfield and the nearby Alpes, whilst providing solar shading and protection against solar gain.

Mathias Koester re-joined RSHP after the Lyon airport competition was won and co-lead the 20+ strong design team as project architect from planning over detail design to site supervision.



He also headed a further design team for the airports interiors, run under a separate contract.



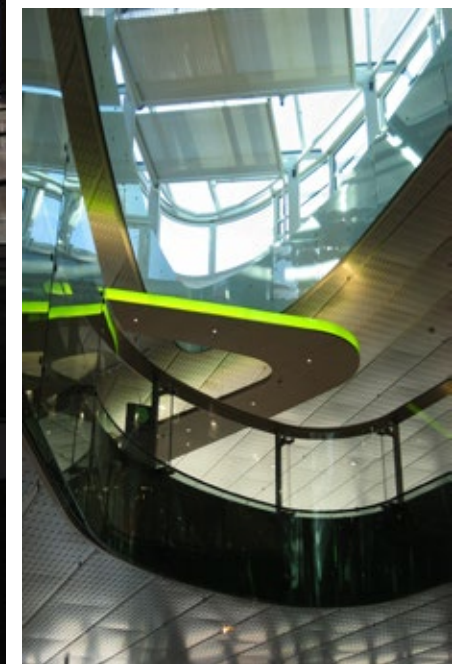
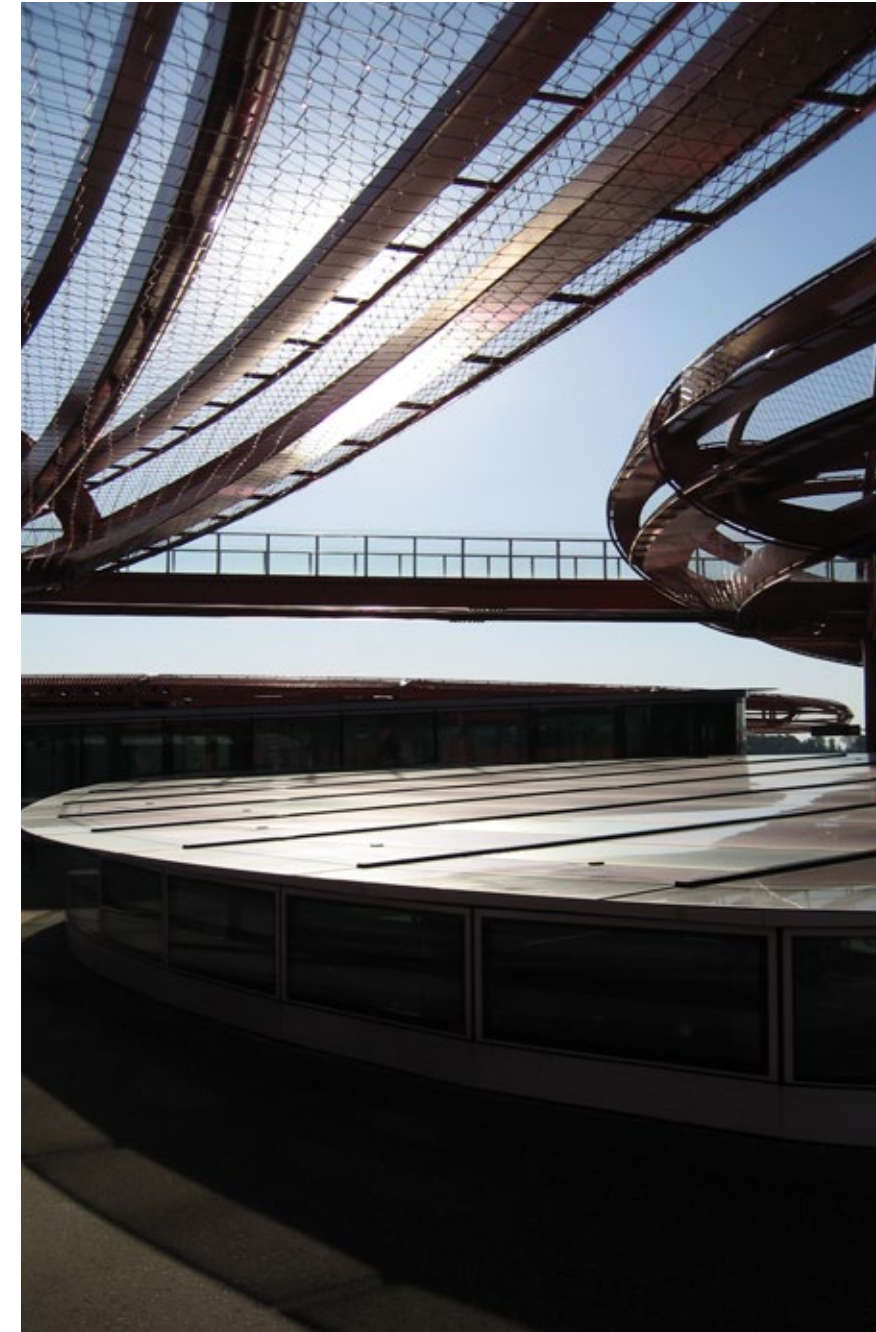
Europark 2 Salzburg

Completed

Awards

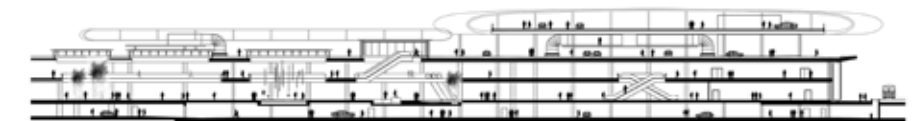
2007 ICSC World Shopping Center Award

World's best mall in the categories
architectural design and sustainability development



Architectural Assistant
Massimiliano Fuksas

Facade, steel and roof design
Detail design and construction
2004 - 05



Europark 2
Salzburg, Austria

Shopping Mall
with rooftop parking

The project is based on the dynamic analysis of flux and comprises of the expansion of the existing shopping center and the landscape design of the surrounding area.

The shopping center is divided into two storeys, two glazed volumes that are penetrated by curved shapes and islands.

The car park at the roof level is covered by a variety of fluid shapes recalling the islands below, which become the focal points of the new complex.

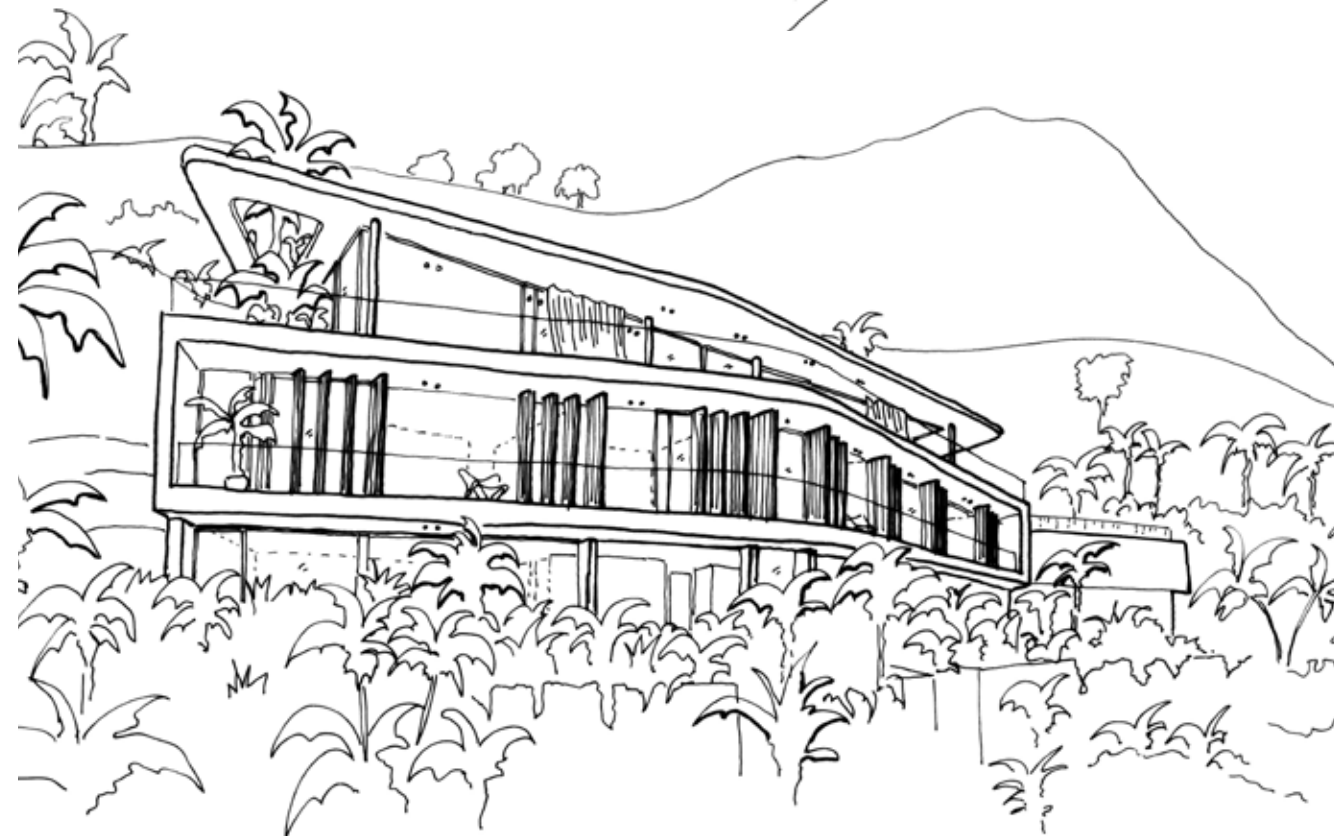
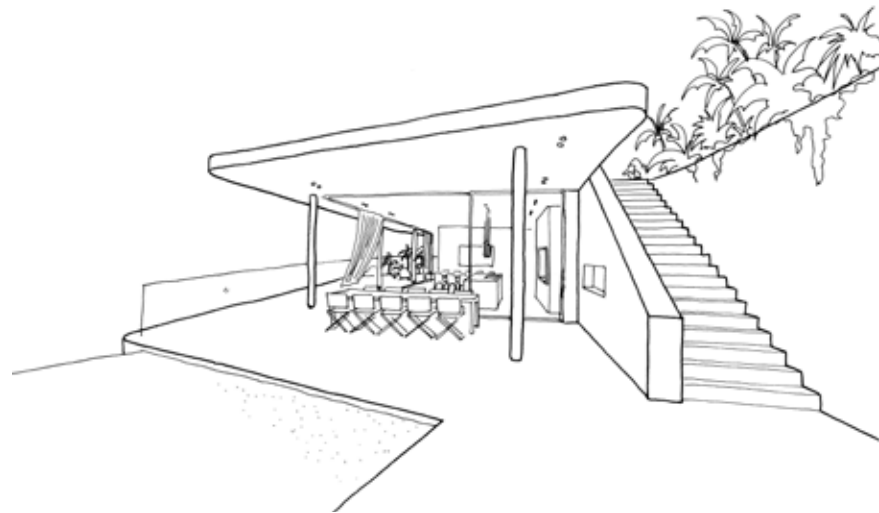
The Mall consists of artificial hills and pedestrian zones while the bushes of bamboo and other tall plants define a new relationship between the buildings and the local geography.

Mathias Koester worked on the detail design of the rounded rooflights, red canopy steelwork and the main glass facades.

High Five
Mallorca, Spain

7 Bed House with panoramic
views over the Mediterranean Sea

Under Construction



Villa Designs Mallorca

MKA Designs for APM 2017-20

Info

More information at:
www.APM-Mallorca.com



Samaniego
Mallorca, Spain

4 Bed Villa with Gym,
Patio and Infinity Pool

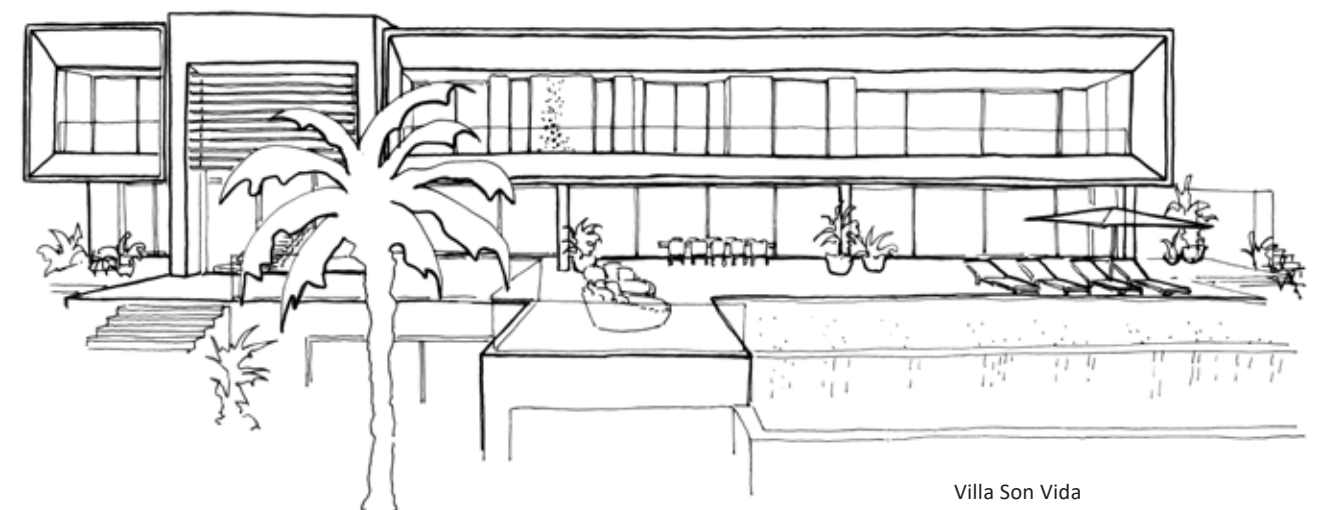
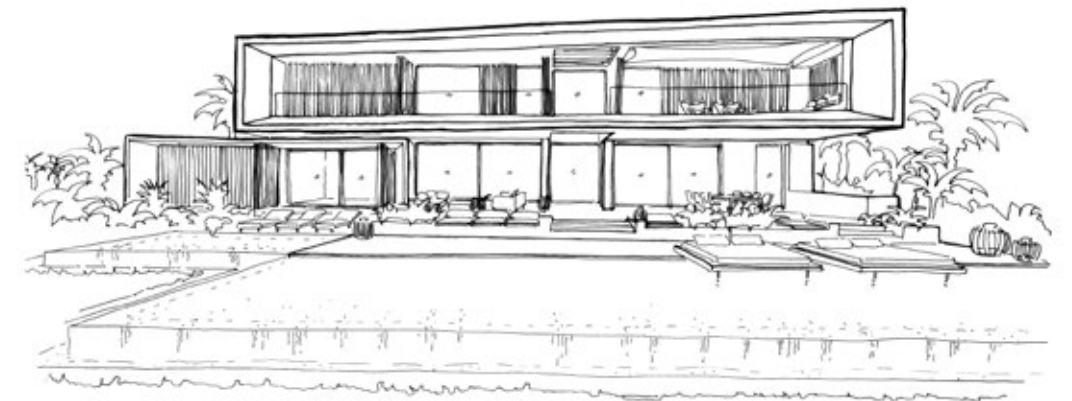
Completed



Villa Goya
Mallorca, Spain

6 Bed Beach House with large
Terraces and Infinity Pools

Under Construction



Villa Son Vida
Mallorca, Spain

5 Bed Family House with Guest-Apartment,
Gym, large Terrace and Infinity Pool

Completed

Architect for
APM Mallorca

Villa concept designs,
detail design and construction
2017 - 20



Studio

Team
Office
Logo





Mathias Koester, Dipl. Ing. Architect

Team

Mathias Koester has 15+ years of experience as project leader, architect and associate for the renowned architecture offices of Foster+Partners, Rogers Stirk Harbour+Partners and Massimiliano Fuksas as well as project developer APM.

In this time, he held key roles in the design and construction process of several ground-breaking buildings – many of which have become award winning icons in their location.

In parallel he worked on the design of innovative and sustainable house projects and was tutoring the courses "design matters" at the Central Saint Martins College of Art in London.

In 2020 he opened his studio Mathias Koester Architects in Palma de Mallorca, designing high-end residential and hotel projects in the Mediterranean and worldwide.



Larissa Arantes, Associate, Architect

Larissa Arantes is a Brazilian-Spanish architect with 8+ years of international work experience in Spain, the Netherlands, Brazil and Canada.

After her initial studies in Brazil and internship in Canada, Larissa completed her Master in Madrid specialising in Building Information Modelling (BIM) as well as Restoration and Refurbishment.

She started to work with ARUP as facade consultant in 2015, contributing to the detail design of unique facade constructions for Foster+Partners, Jean Nouvel, Zaha Hadid, Lamela and Triptyque. In 2017, Larissa moved to Rotterdam to work with Eentien Architecten before joining Mathias Koester Architects 2021 in Palma as architect and 3D design specialist.



Office

From our office in Palma-Portixol we currently work with a team of 3-5 Architects, with occasional meetings and events also held at our "countryside" spaces in Palma-Establiments.

Parking is always available close-by and there are plenty of nice restaurants on the Portixol Beachside - a one minute walk from the office.

So please come by for a coffee, meet the team and maybe discuss any future project you may have.

Mathias Koester Architects SLU
Carrer de Lluçmajor 42
Portixol
07006 Palma de Mallorca

+34 689570493

info@mathiaskoester.com
www.mathiaskoester.com



Logo

Our logo stands for lightness and a close relationship with nature, combining joyful living, luxurious comfort and sustainability in our projects.





Chronology

Project Timeline

Complete List and Awards

Chronology



Zenith Concert Hall France

Architectural Assistant for Foster+Partners

Facade details and Interiors
Concept design to Detail design
2005 - 06



Seascraper UAE

Mathias Koester Architects

Design and Visualisation
Concept Stage
2007 - 2021



Cliff House Spain

Mathias Koester Architects

Design and Visualisation
Concept Stage
2007



Ocean Breeze House Santa Lucia

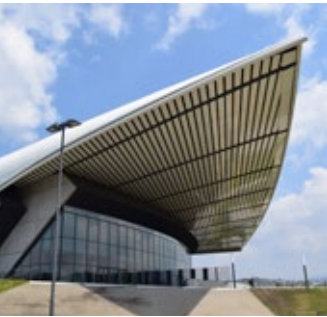
Mathias Koester Architects

Concept Design, Detail Design and Construction
2008 -2012

Europark II Shopping Austria

Architectural Assistant for Massimiliano Fuskas

Facade, steel and roof design
Detail design and construction



Walbrook Office UK

Architect for Foster+Partners

Facade and roof design
Concept design to construction
2006 - 2007



NEO Bankside Residencial UK

Architect for Rogers Stirk Harbour+Partners

Design Lead
Facade and steel detail design
Concept to Construction
2007 - 2010



Leadenhall Tower UK

Associate for Rogers Stirk Harbour+Partners

Facade design
Detail design and tender
2010



Lyon Airport T1 France

Project Co-Lead Architect for Rogers Stirk Harbour+Partners

Design, planning, costs
Building application to construction
2013 - 16



Oasis House Spain

Mathias Koester Architects

Design and Visualisation
Concept Stage
2018 - 2020



Ipiranga Hotel Brazil

Mathias Koester Architects

Design and Visualisation
Concept Stage
2017 - 2021



"P121" Spain

Mathias Koester Architects

Design and Visualisation
Under Construction
2021 - 2022

Treetops Villas Saint Lucia

Mathias Koester Architects

Design and Visualisation
Concept + Detail Design
2013 - 2014



Maisons Sentlisi Saint Lucia

Mathias Koester Architects

Design and Visualisation
Concept Stage
2018 - 19



Full Circle Living Spain

Mathias Koester Architects

Design and Visualisation
Concept Stage
2020



"P116" Spain

Mathias Koester Architects

Design and Site Supervision
Under Construction
2020 - 2022



09 | 2007 – ongoing
Mathias Koester Architects
London, Palma, Hamburg

04 | 2022 - ongoing
P117, Mallorca, 6 Bedroom Villa
Project Architect, concept design

03 | 2021 - 12 | 2022
P120, Mallorca, 9 Bedroom Supervilla
Project Architect, concept design

02 | 2021 - ongoing
P121 Mallorca, 6 Bedroom Villa
Project Architect, concept design,
interior design, site supervision

10 | 2020 - ongoing
P116 Mallorca, 5 Bedroom Beach Villa
Project Architect, concept design,
site supervision

04 | 2020 - 06 | 2020
Full Circle Cabins, Establiments, Spain
Project Architect, concept design

02 | 2019 - ongoing
Oasis House, 5 bedroom Villa, Bendinat, Spain
Project Architect, concept and detail design

10 | 2018- ongoing
Maisons Sentlisi, Double Villas,
Marigot Bay, Saint Lucia
Project Architect, concept and detail design

02 | 2017- ongoing
Sumara Offices, Office Extension and
Refurbishment, Rezc, Poland
Project Architect, concept and detail design

01 | 2017- 04 | 2018
Andalusia Boutique Hotel,
Vejer de la Frontera, Spain
Project Architect, concept design

12 | 2016- 08 | 2017
House Okon, Family House,
Mechernich, Germany
Collaboration with Michael Scheuvens,
Project Architect, concept design, planning

08 | 2016- 08 | 2018
House Stübing, Family House,
Vögelsen, Germany
Project Architect, concept design

06 | 2013 – ongoing
Marigot Treetops, Boutique Hotel,
Marigot Bay, Saint Lucia
Project Architect, concept design,
planning permission and detail design

12 | 2012 – 10 | 2013
The Latitude Commercial Building, Façade
Design, Pune, India
Concept Architect, facade design

10 | 2017 – 10 |20
Arquiproject Mediterraneo
Mallorca

07 | 2020 - 10 | 2020
Elements, 6 Bedroom Villa, Andratx, Spain
Full Project design for APM Mallorca

06 | 2020 - 08 | 2020
Samaniego, 4 Bedroom Villa, Calvia, Spain
Facade design for APM Mallorca

05 | 2020 - 10 | 2020
Goya, 7 Bedroom Villa, Calvia, Spain
Facade design for APM Mallorca

02 | 2020 - 10 | 2020
High Five, 7 Bedroom Seaside Villa, Andratx, Spain
Facade design and plan optimisation for APM
Mallorca

10 | 2017 - 02 | 2020
Villa Son Vida, Luxury 6 bedroom Villa, Palma, Spain
Project Architect, detail design and
site supervision for APM Mallorca

05 | 2007 – 05 | 2016
Rogers Stirk Harbour and Partners
London

08 | 2015 – 05 | 2015
Louvre Conservation Centre, art conservation
centre, Lens/Liévin, France
Project Architect, concept and detail design

09 | 2013 – 08 | 2015
Lyon Airport, airport futur terminal 1, Lyon, France
Project Architect, planning application,
detail design, construction

05 | 2011 – 01 | 2012
Geneva Airport, plusenergy airport extension,
Geneva, Switzerland
Project Architect, planning application,
passenger flow modelling and detail design

03 | 2011 – 01 | 2012
The Lloyds Building, facade redevelopment,
London, UK
Project Architect, planning application,
coordination of consultants, quality control

01 | 2011 – 04 | 2011
International Towers, 3 office towers
and retail, Sydney, Australia
Architect, facade concept design

Awards
2018 RLB Australian Development of the Year
2018 WSP Award for Best Sustainable
Development
2018 Liberty Steel Award

09 | 2010 – 12 | 2010
The Leadenhall Building, 48 level office tower,
London, UK
Architect, façade and detail design, tender

Awards
2018 RIBA National Award
2018 RIBA London Award
2017 British Constructional Steelwork Award
2016 BCO Best Commercial Workplace in the UK
2016 NLA Best Commercial Building
2015 British Council for Office Innovation Award
2015 City of London Building of the Year
2011 Pre-certified BREEAM Excellent Rating
2011 Working (Unbuilt category): NLA Awards

05 | 2007 – 08 | 2010
Neo Bankside, residential 229 flats, London, UK
Architect, façade, structure, and detail design,
coordination of consultants, site supervision

Awards
2015 RIBA Stirling Prize Shortlist
2015 RIBA London Award
2015 RIBA National Award
2014 Urban Habital Award- Finalist
2013 London Building Excellence Awards Best
Large Housing Development
2012 RESI Awards- Development of the Year
2012 Structural Steel Design Awards Commendation
2011 Evening Standard New Homes Awards
2011 Best International Development
International Property Awards

03 | 2005 – 04 | 2007
Foster and Partners
London

05 | 2006 – 04 | 2007
The Walbrook, Office Building, London, UK
Architect, 3d building setting out, facade,
detail and roof design

Awards
Worship Company of Chartered Architects,
New City Architecture Awards High Commendation

03 | 2006 – 04 | 2006
Broadgate West, Office Building, London, UK
Architectural Assistant, feasibility study and
client presentation

05 | 2005 – 03 | 2006
Zénith, Concert Hall, Saint Etienne, France
Architectural Assistant, facade and detail
design, interior fit out
and sustainability features

Awards
2009 RIBA Award

03 | 2005 – 04 | 2005
Boulevard Victor, Office Building, Paris, France
Architectural Assistant, feasibility study and
client presentation

08 | 2004 – 02 | 2005
Fukas Architects
Frankfurt

08 | 2004 – 02 | 2005
Europark 2, Shopping Mall, Salzburg, Austria
Architectural Assistant, façade, rooflights and
detail design, interior fit out and roof structure

Awards
2007 ICSC World Shopping Center Award
World's best mall in the categories architectural
design and sustainability development

04 | 2012 – 11 | 2012
Renner Hainke Wirth Architects
Hamburg

04 | 2012 – 11 | 2012
Neues Korallusviertel, 350 flats, Hamburg,
Germany Project Architect, concept design,
coordination of consultants and planning ap-
plication

04 | 2004
gmp Architects, Walter Gebhardt, Hamburg
National Conference Centre, Hanoi, Vietnam
Architectural Assistant, concept design and
client presentation

Mathias Koester Architects
Portfolio 2005 · 2022

projects by
Mathias Koester Architects
Foster and Partners
Rogers Stirk Harbour + Partners
Massimiliano Fuksas
Arquitecto Mediterraneo

images © by Mathias Koester,
unless stated otherwise

publisher
Mathias Koester Architects SLU
Palma, October 2022

info@mathiaskoester.com
www.mathiaskoester.com

*not for sale or
public display*

Thank you!

mathias**koester** 
a r c h i t e c t s



www.mathiaskoester.com